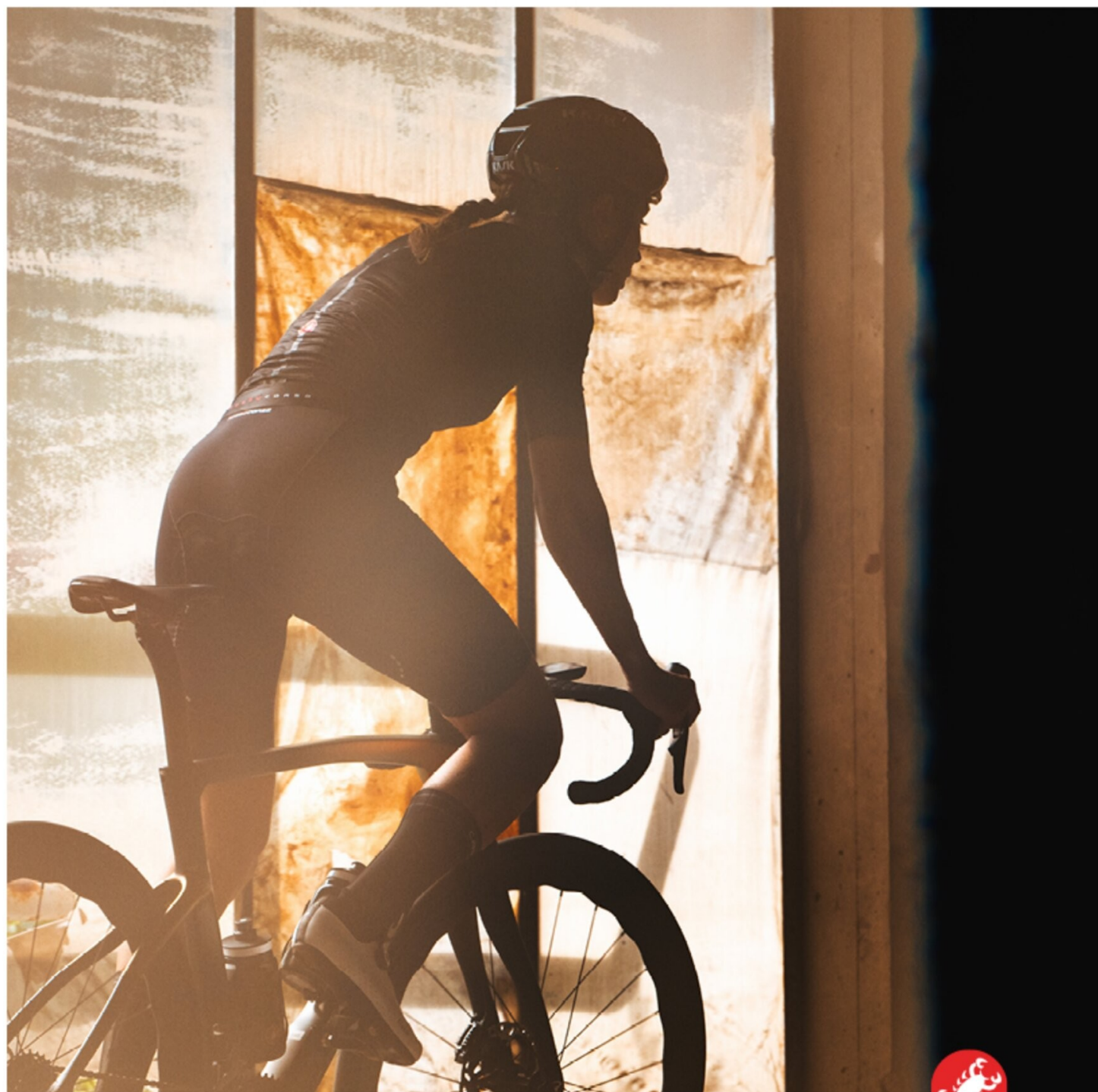


# CASTELLI

SPRING SUMMER WOMEN'S 2026



[GO TO MEN'S CATALOG](#)

# WOMEN'S COLLECTION

SHORTS [➔](#)

JERSEYS [➔](#)

SUMMER TRAVEL [➔](#)

HOT WEATHER PRODUCTS [➔](#)

UNLIMITED [➔](#)

BASE LAYERS [➔](#)

ACCESSORIES [➔](#)

ALL WEATHER PROTECTION [➔](#)

360 PRODUCTS [➔](#)



SPRING SUMMER 2026

## OFF BIKE

MEN'S OFF BIKE [→](#)

WOMEN'S OFF BIKE [→](#)



## TRIATHLON

MEN'S TRIATHLON [→](#)

WOMEN'S TRIATHLON [→](#)


TRIATHLON ACCESSORIES [→](#)



RACE BAGS [→](#)

**SPRING SUMMER 2026**



A blurred landscape featuring a river or stream in the foreground, with rolling green hills and mountains in the background. The image has a motion blur effect, suggesting movement. In the bottom left corner, the edge of a person's face wearing glasses is visible.

WOMEN'S SHORTS

# PREMIO EVO W DT BIBSHORT

4525039



SIZES

XS S M L XL

WEIGHT

287 g

WATERPROOFNESS

T° RANGE

16-35 °C / 60-95 °F

FIT

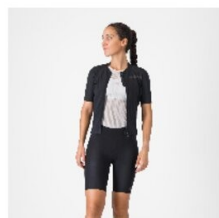
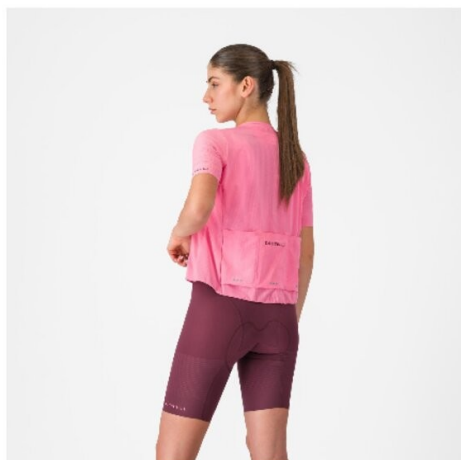
Tailored

WINDPROOFNESS

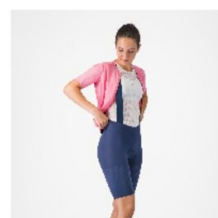
PROGETTO X2 AIR SEAMLESS DONNA

Innovatively engineered for ultimate long-distance comfort, support, speed, and durability.

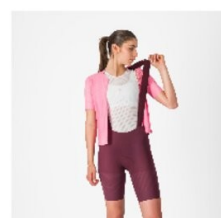
Gradient-stretch woven fabric for the right support in the right place  
 Woven fabric weighs 30% less than comparable knit fabric  
 Soft, stretchy elastic bib straps with drop-tail design for easy nature breaks  
 Integrated gripper elastic at leg ending holds short in place without need for additional silicone grippers  
 Progetto X2 Air Seamless Donna seat pad



010  
BLACK



424  
BELGIAN BLUE



625  
DEEP BORDEAUX/ROSA GIRO

# PREMIO EVO W SHORT

4525040

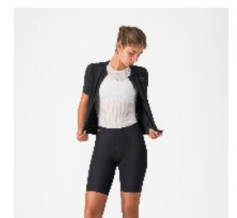


SIZES	T° RANGE
XS S M L XL	16-35 °C / 60-95 °F
WEIGHT	FIT
336 g	Tailored
WATERPROOFNESS	WINDPROOFNESS

PROGETTO X2 AIR SEAMLESS DONNA

Innovatively engineered for ultimate long-distance comfort, support, speed, and durability.

Gradient-stretch woven fabric for the right support in the right place  
 Woven fabric weighs 30% less than comparable knit fabric  
 Flat waist keeps short in place without pressure  
 Integrated gripper elastic at leg ending holds short in place without need for additional silicone grippers  
 Progetto X2 Air Seamless Donna seat pad



010  
BLACK

# FREE AERO RACE S W BIBSHORT

4525041

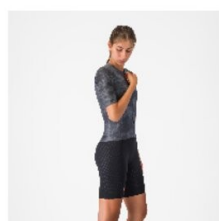


SIZES	T° RANGE
XS S M L XL	15-35 °C / 59-95 °F
WEIGHT	FIT
206 g	Race
WATERPROOFNESS	WINDPROOFNESS

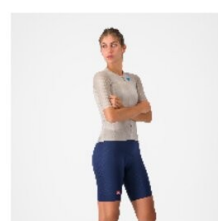
PROGETTO X2 **ROSMICORSA**

Comfort and aerodynamics meet in the fastest, most comfortable Free Aero Race Bibshort to date.

Aero-optimized Forza2 Stretch fabric for maximum comfort and aerodynamic advantage  
 Aero-optimized fabric delivers 3% decrease in CdA  
 Drop Tail stretch bib straps for comfort and easy nature breaks  
 Silicone leg grippers to keep the leg endings in place  
 Progetto X2 Air Seamless Donna seat pad for comfort even on your longest rides  
 Back pocket for extra storage or race radio  
 Short fabric rated to 50+ UPF protection



010  
BLACK



424  
BELGIAN BLUE



001  
WHITE

# FREE AERO RACE S SHORT

4525042

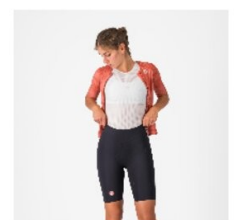


SIZES	T° RANGE
XSSMLXL	15-35 °C / 59-95 °F
WEIGHT	FIT
185 g	Race
WATERPROOFNESS	WINDPROOFNESS

progetto X ROSICORSA

Comfort and aerodynamics meet in the fastest, most comfortable Free Aero Race Short to date.

Aero-optimized Forza2 Stretch fabric for maximum comfort and aerodynamic advantage  
 Aero-optimized fabric delivers 3% decrease in CdA  
 Silicone leg grippers to keep the leg endings in place  
 Progetto X2 Air Seamless Donna seat pad for comfort even on your longest rides  
 Fabric rated to 50+ UPF protection




010  
BLACK

espresso  
CASTELLI



CASTEL



**ESPRESSO 2 W DT  
BIBSHORT – REFINED  
BY RIDERS, PERFECTED  
BY CASTELLI**

Our goal was clear: to create the most comfortable and functional bibshort on the market for female riders. No shortcuts, no compromises—just a deep focus on real performance for real women who ride. We started with what we already loved, then pushed every detail further. Improved fit through precise pattern work, refined bib construction for better support and easier wear.

Alongside these updates, we introduced our new logo—a subtle but important step forward in our design evolution. Clean, modern, and made to move with you. This is the result of countless hours of testing, feedback, and fine-tuning. Built for comfort. Designed for performance. Made for women who ride hard.



# ESPRESSO 2 W DT BIBSHORT

4526051

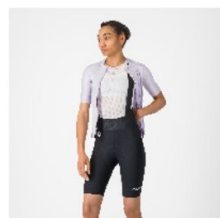
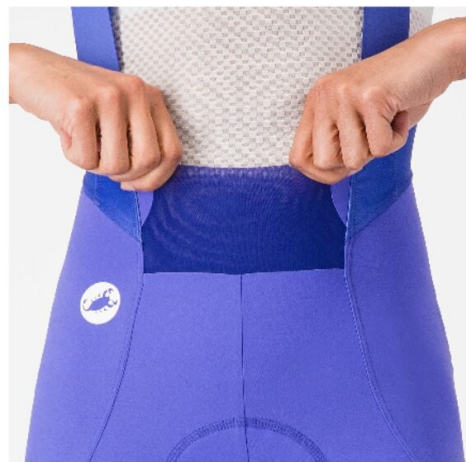


SIZES	T° RANGE
XXS XS S M L XL	15-35 °C / 59-95 °F
WEIGHT	FIT
174 g	Tailored
WATERPROOFNESS	WINDPROOFNESS

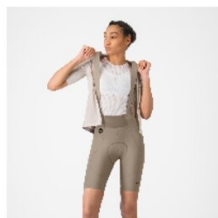


Your favourite bibshort. Revised & refined. 2.0

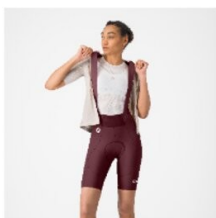
Castelli-engineered Espresso Doppio fabric for comfort and perfect fit  
 Raw-cut leg endings with silicone grippers  
 Drop Tail stretch bib straps for comfort and easy nature breaks  
 Progetto X2 Air Seamless Donna seat pad for all-day comfort  
 Extended front and rear panels with folded lightweight mesh for smoother interface with jersey  
 Designed for improved comfort and coverage where bibshort and jersey meet



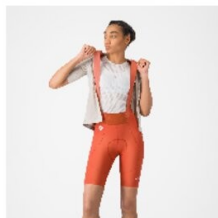
010  
BLACK



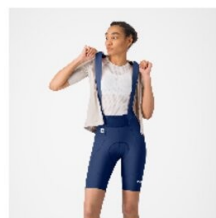
294  
CLAY



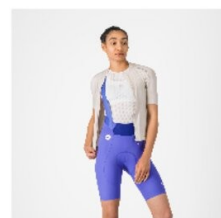
625  
DEEP BORDEAUX



655  
PAPRIKA



424  
BELGIAN BLUE



501  
ULTRAVIOLET

CASTELLI CYCLING

# ESPRESSO 2 W SHORT

4526112



SIZES

XXS XS S M L XL

T° RANGE

15-35 °C / 59-95 °F

WEIGHT

154 g

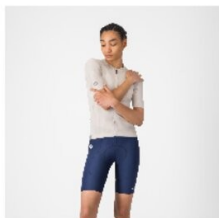
FIT

Tailored

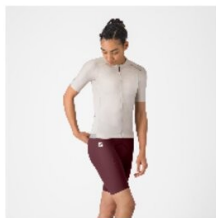
WATERPROOFNESS

WINDPROOFNESS

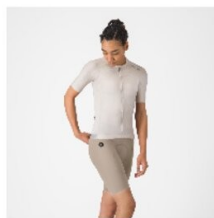
progetto X



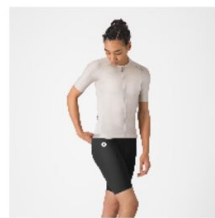
424  
BELGIAN BLUE



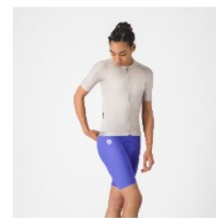
625  
DEEP BORDEAUX



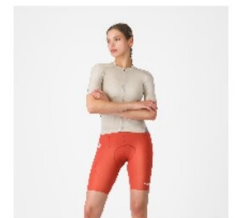
294  
CLAY



010  
BLACK



501  
ULTRAVIOLET



655  
PAPRIKA

# ENDURANCE W BIBSHORT

4522048

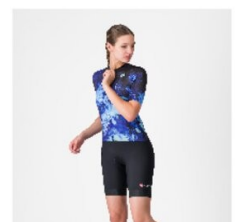
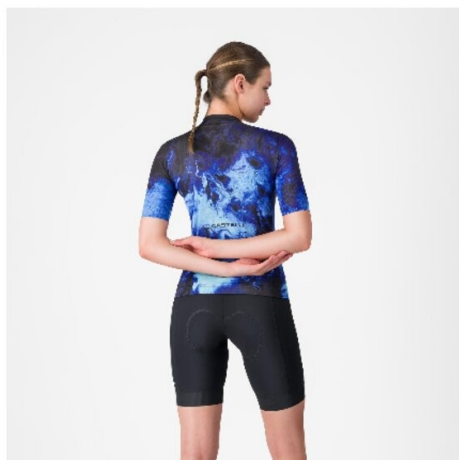


SIZES	T° RANGE
XSSMLXL	15-38 °C / 59-100 °F
WEIGHT	FIT
187 g	Tailored
WATERPROOFNESS	WINDPROOFNESS

PROGETTO X2

Endurance-level comfort for every ride with Castelli's most comfortable seat pad.

Endurance Evolution fabric provides optimum muscle support and feels drier in nearly all conditions  
 Anatomic cut for perfect on-bike fit  
 Bib straps can cross in front or back and are extra elastic, allowing short to be pulled down for pee stops without removing bibs  
 Women's-specific Progetto X2 Air Donna seamless seat pad for even greater comfort and improved airflow  
 GIRO3 leg grippers lie flat



010  
BLACK

# ENDURANCE W SHORT

4522049

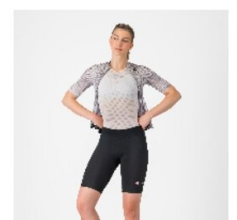


SIZES	T° RANGE
XSSMLXL	- °C / - °F
WEIGHT	FIT
140 g	Tailored
WATERPROOFNESS	WINDPROOFNESS

**KISS**<sup>AIR<sup>2</sup></sup>

Endurance-level comfort for every ride with Castelli's most comfortable seat pad.

Endurance Evolution fabric provides optimum muscle support and feels drier in nearly all conditions  
 Anatomic cut for perfect on-bike fit  
 Soft elastic at waist lies flat without binding  
 Women's-specific Progetto X2 Air Donna seamless seat pad for even greater comfort and improved airflow  
 GIRO3 leg grippers lie flat



010  
BLACK

# PRIMA 2 DT BIBSHORT

4525044



SIZES

XSSMLXL

WEIGHT

178 g

WATERPROOFNESS

T° RANGE

16-35 °C / 60-95 °F

FIT

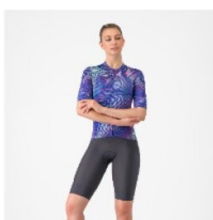
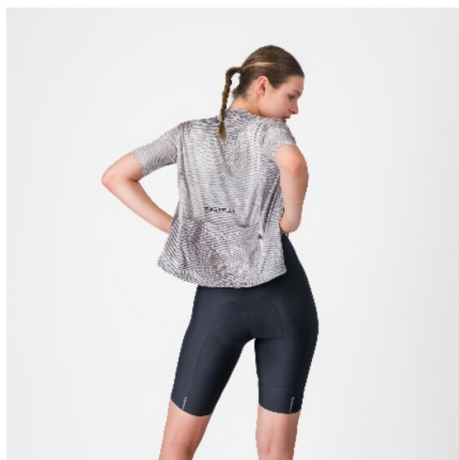
Regular

WINDPROOFNESS

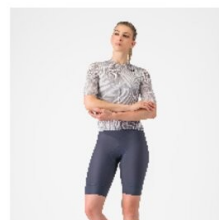
**KISS**AIR<sup>2</sup>

Comfortable so all you need to do is enjoy the ride.

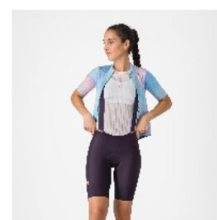
Pro2 Dry Soft fabric feels amazing on the skin and supremely comfortable  
 Anatomic construction for perfect fit  
 Lie-flat leg back with silicone gripper  
 Soft, stretchy elastic bib straps with drop-tail design for easy nature breaks  
 KISS Air 2 Donna seat pad  
 Color inserts to match your favorite jersey  
 Reflective tabs for safety



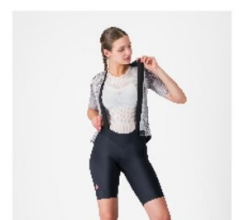
030  
DARK GRAY/POOL BLUE



456  
TWILIGHT BLUE/HIBISCUS



513  
DARK NIGHT SHADE/DEEP PURPLE



010  
BLACK/BLACK

# PRIMA 2 SHORT

4525045



SIZES

X S S M L XL

WEIGHT

150 g

WATERPROOFNESS

T° RANGE

16-35 °C / 60-95 °F

FIT

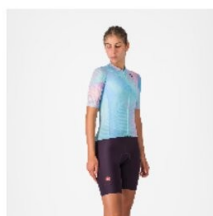
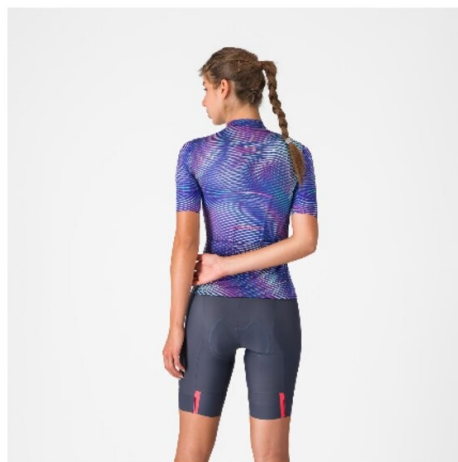
Regular

WINDPROOFNESS

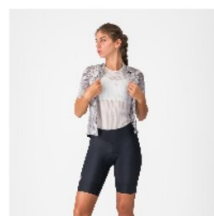
**KISS**<sup>AIR<sup>2</sup></sup>

Comfortable so all you need to do is enjoy the ride.

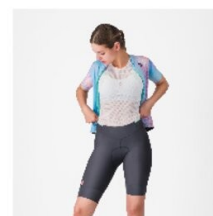
Pro2 Dry Soft fabric feels amazing on the skin and supremely comfortable  
 Anatomic construction for perfect fit  
 Lie-flat leg back with silicone gripper  
 KISS Air 2 Donna seat pad  
 Color inserts to match your favorite jersey  
 Reflective tabs for safety



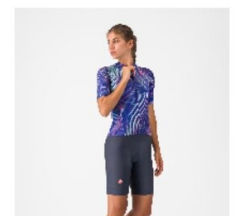
513  
DARK NIGHT SHADE/DEEP PURPLE



010  
BLACK/BLACK



030  
DARK GRAY/POOL BLUE



456  
TWILIGHT BLUE/HIBISCUS

# MOVEMENT SUIT

4526068

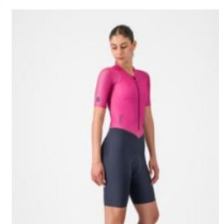
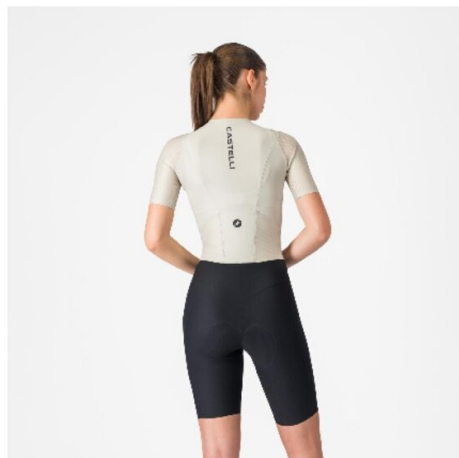


SIZES	T° RANGE
XS S M L XL	15-35 °C / 59-95 °F
WEIGHT	FIT
236 g	Tailored
WATERPROOFNESS	WINDPROOFNESS

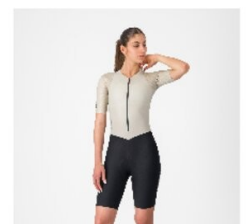
PROGETTO X

The Movement Suit is a purpose-built piece of performance engineering tailored for women who ride with intensity.

Women's-specific one-piece suit for performance riding  
 Shorter leg and sleeve lengths tailored for a more natural female fit  
 Short portion features Castelli-engineered Espresso Doppio fabric for comfort and perfect fit  
 Low-profile collar  
 Reengineered rear pockets for easier access  
 Progetto X2 Air Seamless Donna seat pad



563  
VIOLET PINK/TWILIGHT BLUE



053  
SILVER MOON/BLACK

# PURPOSE BUILT AND TAILORED FOR WOMEN

The Movement Suit is our most advanced solution for female cyclists who demand performance and precision at high intensity. A seamless jersey-and-bibshort integration built specifically for the female form, it's designed to disappear in motion — letting you ride harder, longer, and with greater comfort. Every detail has been considered.

A shortened leg and sleeve length offers a more natural, proportional fit. The soft, contoured collar reduces pressure and enhances comfort over long distances. We've reimagined the traditional three-pocket layout, shaping them for easier access to nutrition and essentials helping to enhance the suit's profile.

The Movement Suit is a purpose-built piece of performance engineering tailored for women who ride with intensity.





WOMEN'S JERSEYS



# PREMIO EVO W JERSEY

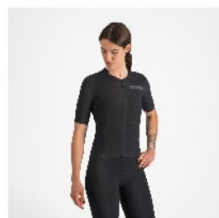
4525047



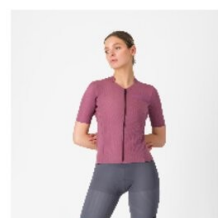
SIZES	T° RANGE
XSSMLXL	18-35 °C / 64-95 °F
WEIGHT	FIT
259 g	Tailored
WATERPROOFNESS	WINDPROOFNESS

Premio comfort. Premio style. Premio performance.

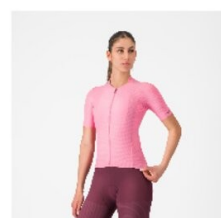
Stretch woven lightweight body fabric in recycled microfiber polyester for excellent moisture management and 26% elastane for stretch  
 Shoulder panel in recycled ribbed stretch woven mesh to keep you cool and comfortable while adding world-class aerodynamics  
 Collarless construction makes it feel lighter and cooler  
 Reverse-coil self-locking YKK® zipper with U-shaped zipper pull for easy adjustment  
 Silicone gripper elastic on back with no-sew bonded front elastic panel  
 3 rear pockets with additional hidden zippered security pocket  
 Reflective points on back pocket for visibility  
 UPF 50



085  
LIGHT BLACK



529  
DEEP PURPLE



025  
ROSA GIRO

# AERO RACE 8S W JERSEY

4526076



SIZES

XS S M L XL

T° RANGE

18-35 °C / 64-95 °F

WEIGHT

105 g

FIT

Race

WATERPROOFNESS

WINDPROOFNESS

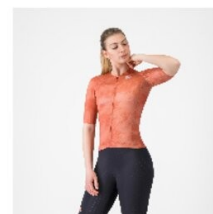
**CASTELLI CORSA**

More than a decade of speed innovation and knowledge. Our fastest jersey is now faster

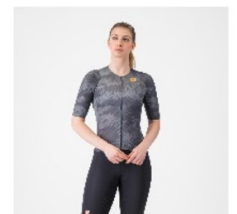
- CFD-based fabric placement and seam construction
- Engineered shoulder fabric used specifically to reduce drag at race speeds, with as much as 6% savings in CdA
- Bonded sleeve endings for comfort
- Lightweight body fabric for optimal cooling, breathability, and comfort
- Elastic at waist to keep jersey in place and support loaded pockets
- 3 rear cargo pockets
- YKK® Vislon® zipper for easy use
- Reflective tab for added safety



294  
CLAY



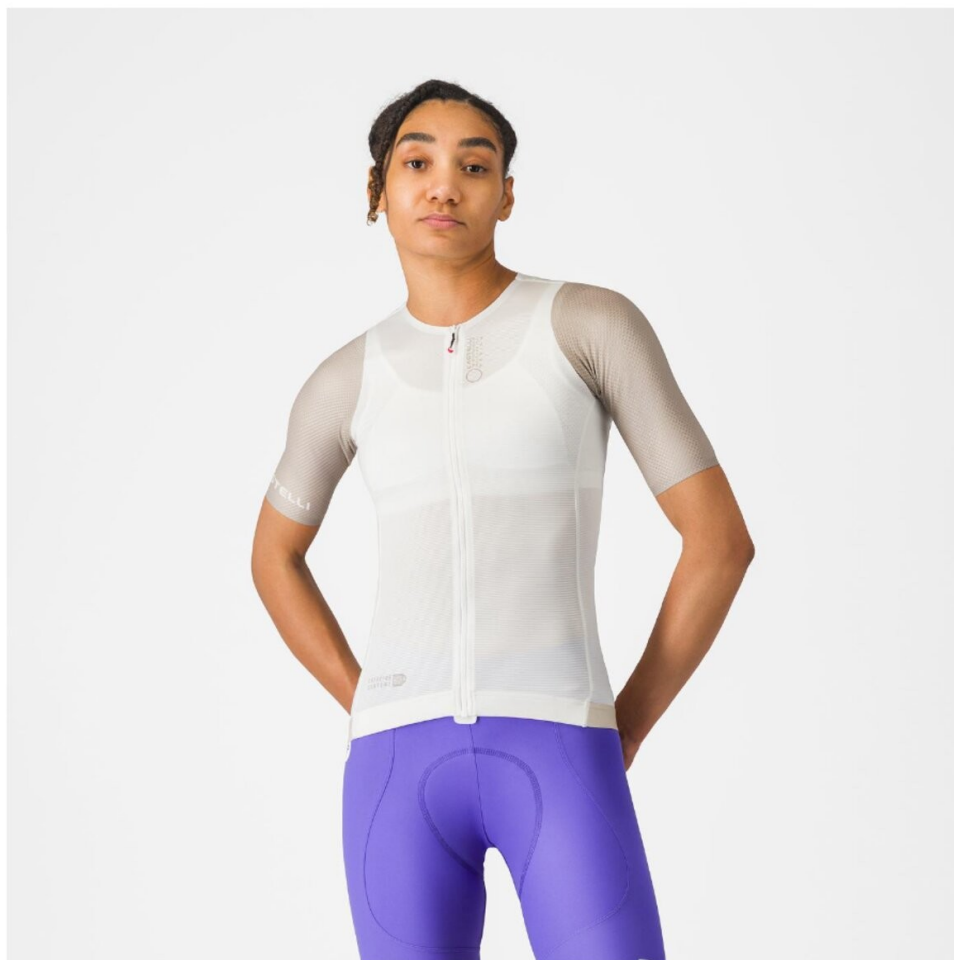
655  
PAPRIKA



030  
DARK GRAY

# CORRETTO W JERSEY

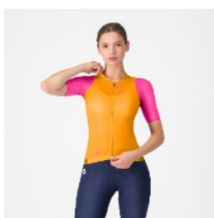
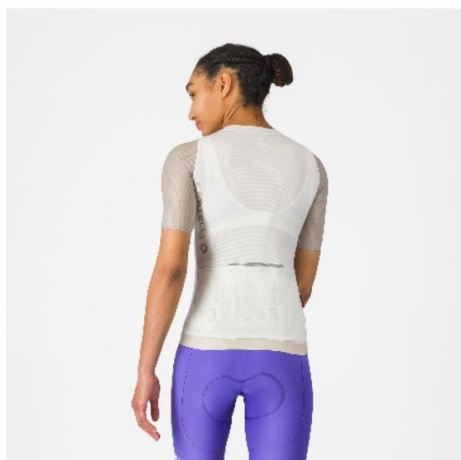
4526053



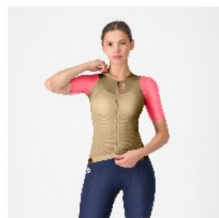
SIZES	T° RANGE
XSS M L XL	18-35 °C / 64-95 °F
WEIGHT	FIT
134 g	Race
WATERPROOFNESS	WINDPROOFNESS

Espresso + Grappa = Corretto

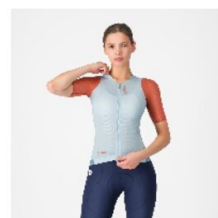
Race fit — ideal for high-intensity road riding and racing  
 Engineered with contrasting fabrics on body and sleeves to optimize comfort in key zones  
 Sleeve and body fabric optimized for breathability and aerodynamics  
 Sleeves finished with bonded tape edges  
 Contoured collar construction enhances fit around neck  
 3 back pockets with fourth zippered security pocket for valuables  
 Full-length YKK® Vislon® zipper with easy-use zipper pull  
 Elastic at waist with silicone to keep jersey in place



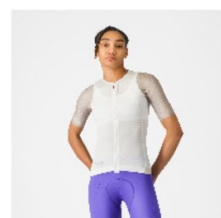
863  
VIVID ORANGE/VIOLET PINK



204  
ELMWOOD/ROSA GIRO



486  
WINTER SKY/HOT SAUCE



065  
IVORY/CLAY

# CORRETTO W LONG SLEEVE JERSEY

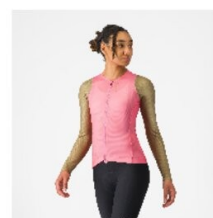
4526054



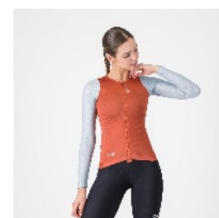
SIZES	T° RANGE
XSS M L XL	15-30 °C / 59-86 °F
WEIGHT	FIT
162 g	Race
WATERPROOFNESS	WINDPROOFNESS

Espresso + Grappa = Corretto

Race fit — ideal for high-intensity road riding and racing  
 Summer-weight fabrics with long sleeves are ideal for cool days  
 Engineered with contrasting fabrics on body and sleeves to optimize comfort in key zones  
 Sleeve and body fabric optimized for breathability and aerodynamics  
 Contoured collar construction enhances fit around neck  
 3 back pockets with fourth zippered security pocket for valuables  
 Full-length YKK® Vislon® zipper with easy-use zipper pull  
 Elastic at waist with silicone to keep jersey in place



025  
ROSA GIRO/ELMWOOD



655  
PAPRIKA/WINTER SKY

espresso  
CASTELLI





# YOUR FAVOURITE JERSEY. REVISED & REFINED. 2.0

When we set out to make the original Espresso Jersey, we wanted the jersey that we'd always reach for no matter if you normally wear an aero race-fit jersey or a more regular cut jersey. We developed a fabric that would allow for a close-to-body fit without being constrictive or feeling tight. Our proprietary Air\_0 fabric also offers great breathability and moisture management, and amazingly tests well in the wind tunnel.

With innovation in our DNA and a healthy obsession for details, we set about perfecting our favourite jersey. The updates for Espresso 2.0 Jersey include even better fit: close to body but never restricting. We focused a lot of attention on improving the pocket structure, giving even better support and compression while reducing pocket sag and we added a nice finish to the edge.

Of course the 4th zip pocket remains as an essential for valuables. You can find the updated subtle logos in tone on tone color, and our signature red scorpion on the zipper puller.



# ESPRESSO 2 W JERSEY

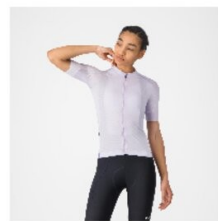
4526055



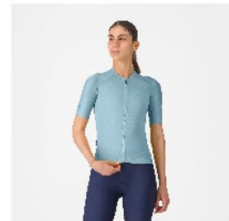
SIZES	T° RANGE
XXS XS S M L XL	18-35 °C / 64-95 °F
WEIGHT	FIT
105 g	Tailored
WATERPROOFNESS	WINDPROOFNESS

Your favourite jersey. Revised & refined. 2.0

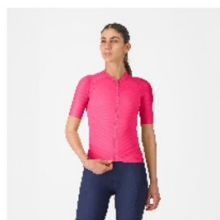
Castelli-engineered Air\_0 Stretch fabric for breathability, comfort, and perfect fit  
 Fabric optimized for breathability and aerodynamics  
 Raw-cut sleeve endings for comfort  
 3 back pockets with fourth zippered security pocket for valuables  
 Full-length YKK® Vislon® zipper with easy-use zipper pull  
 Elastic at waist with silicone to keep jersey in place  
 UPF 30



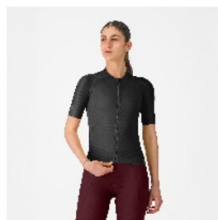
538  
PURPLE MIST



486  
WINTER SKY



025  
ROSA GIRO



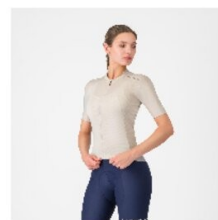
010  
BLACK



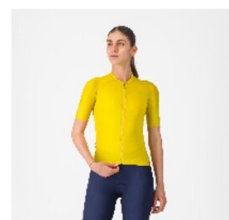
424  
BELGIAN BLUE



501  
ULTRAVIOLET



053  
SILVER MOON



712  
MANGO MOJITO



# ESPRESSO 2 W LONG SLEEVE JERSEY

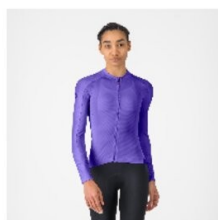
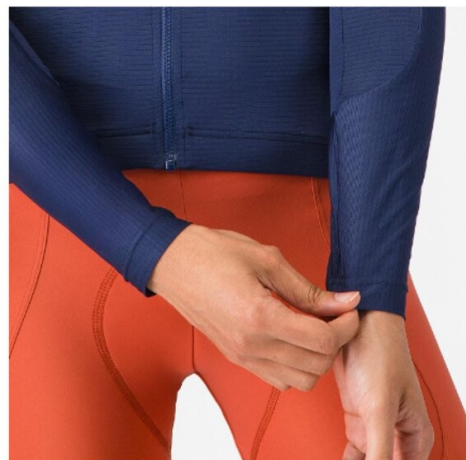
4526056



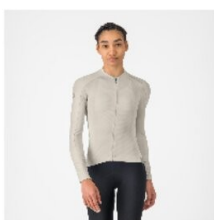
SIZES	T° RANGE
XXS XS S M L XL	15-30 °C / 59-86 °F
WEIGHT	FIT
123 g	Tailored
WATERPROOFNESS	WINDPROOFNESS

Designed to be your favorite jersey for every ride except race day. Espresso comfort and style, revised and refined. 2.0. Summer-weight fabric for cool days.

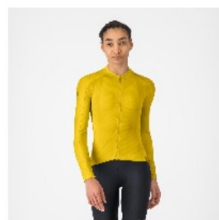
Castelli-engineered Air\_0 Stretch fabric for breathability, comfort, and perfect fit  
 Summer-weight fabric optimized for breathability and aerodynamics, perfect for cool days  
 Raw-cut sleeve endings for comfort  
 3 back pockets with fourth zippered security pocket for valuables  
 Full-length YKK® Vislon® zipper with easy-use zipper pull  
 Elastic at waist with silicone to keep jersey in place  
 UPF 30



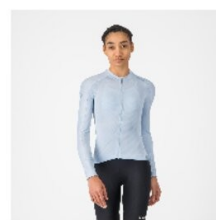
501  
ULTRAVIOLET



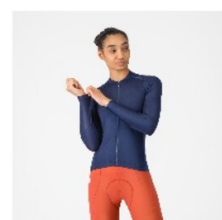
053  
SILVER MOON



712  
MANGO MOJITO



486  
WINTER SKY



424  
BELGIAN BLUE

# ESPRESSO 2 W VEST

4526057



SIZES

XXS XS S M L XL

T° RANGE

12-20 °C / 53-68 °F

WEIGHT

111 g

FIT

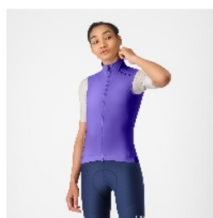
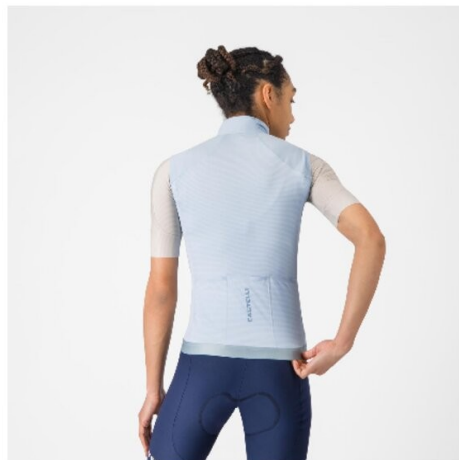
Tailored

WATERPROOFNESS

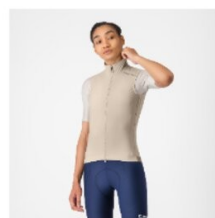
WINDPROOFNESS

The perfect vest to match your favorite Espresso kit. Wind protection front, breathable back, highly packable, 3 pockets, double-opening zipper.

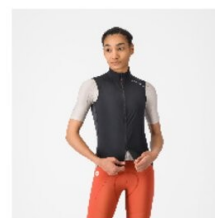
Stretch woven front to allow just enough air through to keep you dry and comfortable  
 Air\_0 Stretch fabric on back and sides for breathability, comfort, and perfect fit  
 3 back pockets  
 Top- and bottom-opening YKK® zipper  
 Elastic at waist to keep vest in place



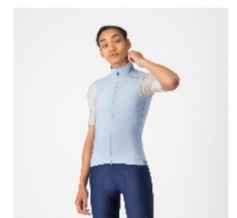
501  
ULTRAVIOLET



294  
CLAY



010  
BLACK



486  
WINTER SKY

# ANIMA FLOW JERSEY

4526058



SIZES

XSS M L XL

T° RANGE

18-35 °C / 64-95 °F

WEIGHT

111 g

FIT

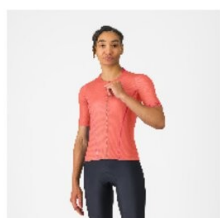
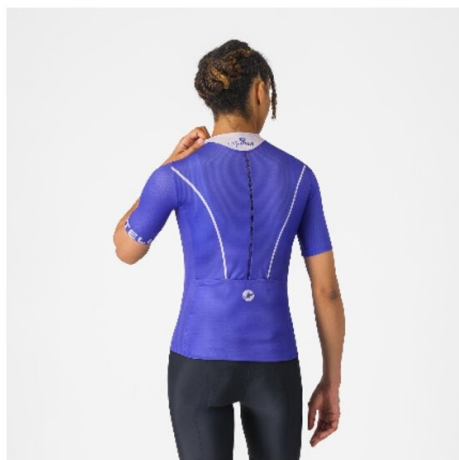
Regular

WATERPROOFNESS

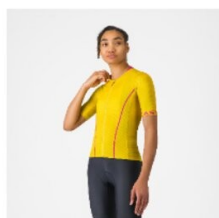
WINDPROOFNESS

The Anima Flow Jersey balances performance, comfort, and timeless style

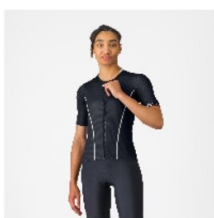
Sublimation-printed jacquard-knit lightweight fabric keeps you cool and dry  
 Close-to-body fit  
 Vertical ventilation strip runs length of back  
 3 back pockets  
 Raw-cut sleeve endings



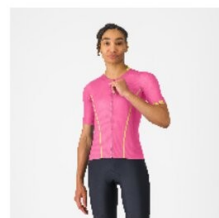
288  
BRILLIANT PINK/HIBISCUS



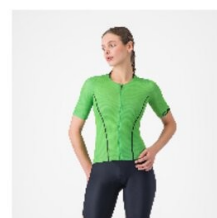
712  
MANGO MOJITO/VIOLET PINK



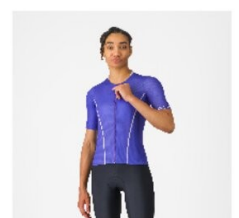
010  
BLACK/WHITE



025  
ROSA GIRO/MANGO MOJITO



047  
KELLY GREEN/BLACK



501  
ULTRAVIOLET/PURPLE MIST

# ANIMA FLOW SLEEVELESS

4526059



SIZES

XSSMLXL

WEIGHT

96 g

WATERPROOFNESS

T° RANGE

22-40 °C / 71-104 °F

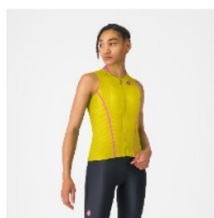
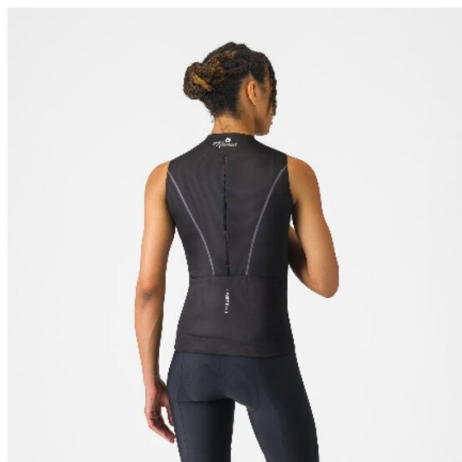
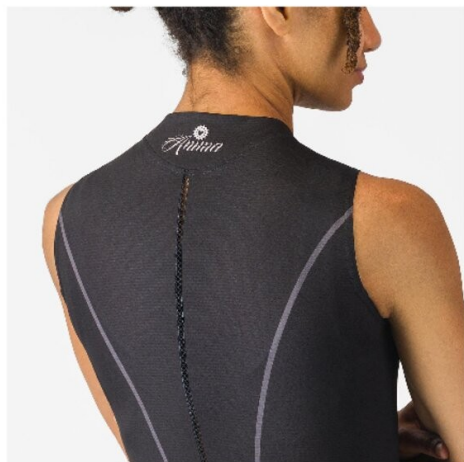
FIT

Regular

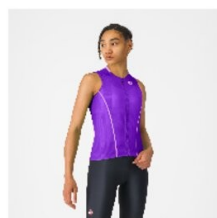
WINDPROOFNESS

The Anima Flow Jersey balances performance, comfort, and timeless style

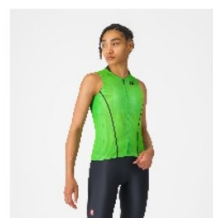
Sublimation-printed jacquard-knit lightweight fabric keeps you cool and dry  
 Close-to-body fit  
 Vertical ventilation strip runs length of back  
 3 back pockets



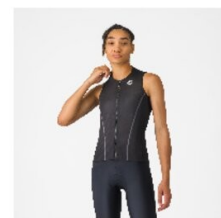
712  
MANGO MOJITO/VIOLET PINK



501  
ULTRAVIOLET/PURPLE MIST



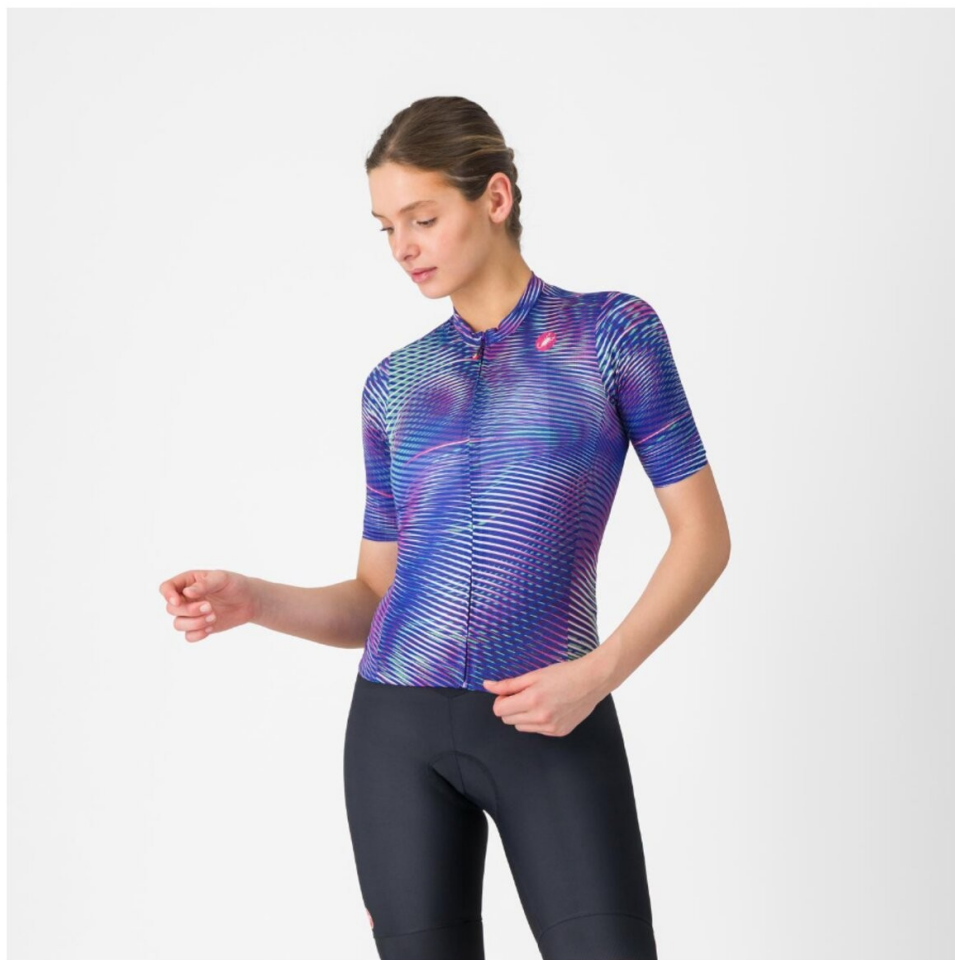
047  
KELLY GREEN/BLACK



010  
BLACK/WHITE

# COSMIC VORTEX JERSEY

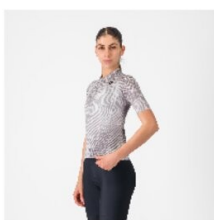
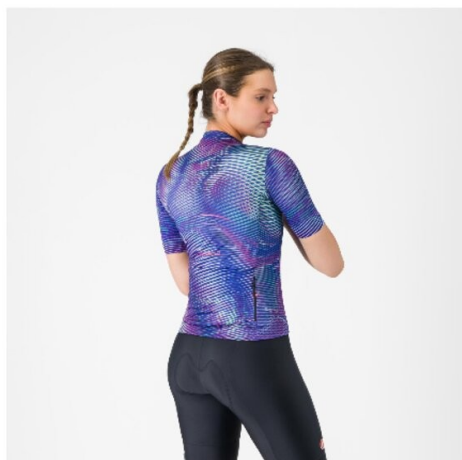
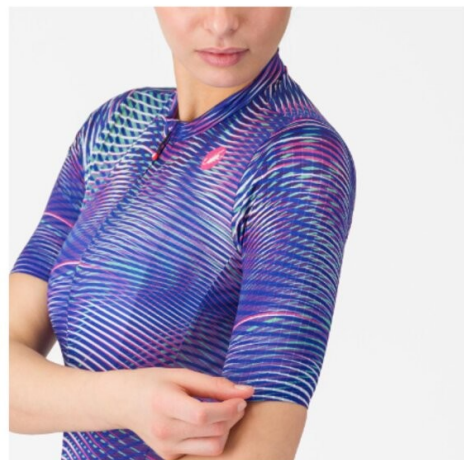
4526060



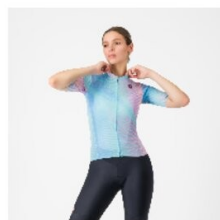
SIZES	T° RANGE
XSSMLXL	18-35 °C / 64-95 °F
WEIGHT	FIT
98 g	Tailored
WATERPROOFNESS	WINDPROOFNESS

The Cosmic Vortex Jersey represents the new era of Castelli design — unapologetically bold and built for high performance.

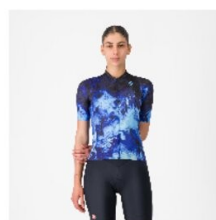
- Strada micromesh ventilated stretch fabric for great fit and moisture management
- Raw-cut sleeve endings
- Full-length YKK® Vislon® zipper
- 3 back pockets with fourth zippered security pocket for valuables
- Silicone gripper elastic at waist



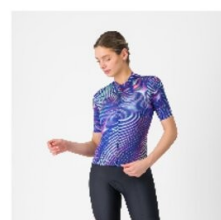
008  
GRAY



991  
MULTICOLOR PINK GREEN



987  
MULTICOLOR VIOLET BLUE



998  
MULTICOLOR ULTRAVIOLET ROSE

SUMMER TRAVEL



# COMFORT TRAVEL CROP TOP

4526109



SIZES

S/M/L/X

WEIGHT

90 g

WATERPROOFNESS

T° RANGE

15-35 °C / 59-95 °F

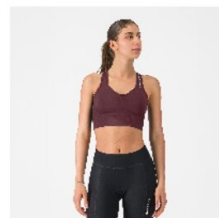
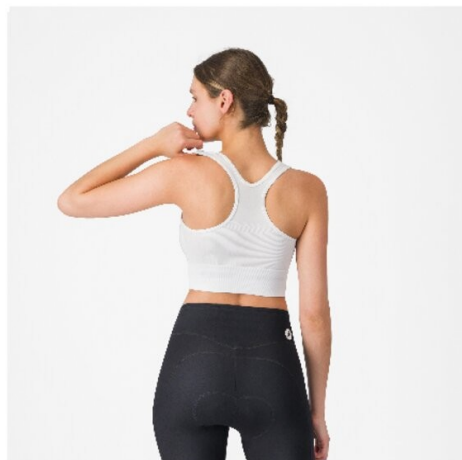
FIT

Regular

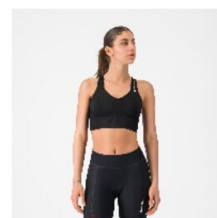
WINDPROOFNESS

The Crop Top was made for women who ride with intention, not intensity

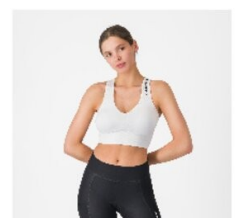
Seamless construction for a pure comfort fit  
 Engineered stretch zones for support and freedom of movement  
 Breathable knit design keeps you cool on and off the bike  
 Soft, second-skin feel for all-day comfort  
 Designed for weekend adventures



625  
DEEP BORDEAUX



010  
BLACK



001  
WHITE

**DESIGNED FOR THE  
FEMALE CYCLIST**  
WHO VALUES  
COMFORT AND STYLE  
OVER SPEED



The Crop Top was made for women who ride with intention, not intensity.

With a soft stretch feel and supportive cut, it's ideal for hot days and spontaneous weekend detours.

Wear it solo or layer it under the Mesh Tee — it's designed to move with you, not restrict you.

# COMFORT TRAVEL SHORT

4526063



SIZES

XS S M L XL

WEIGHT

136 g

WATERPROOFNESS

T° RANGE

15-35 °C / 59-95 °F

FIT

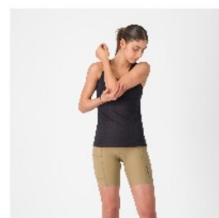
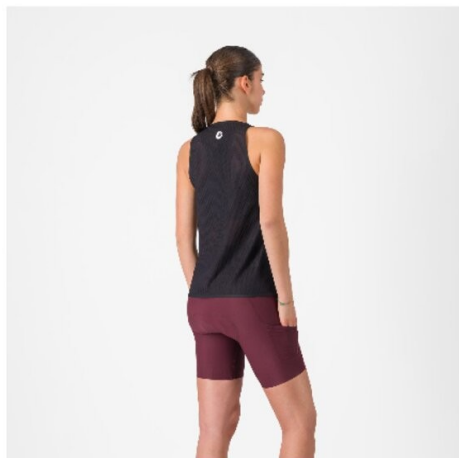
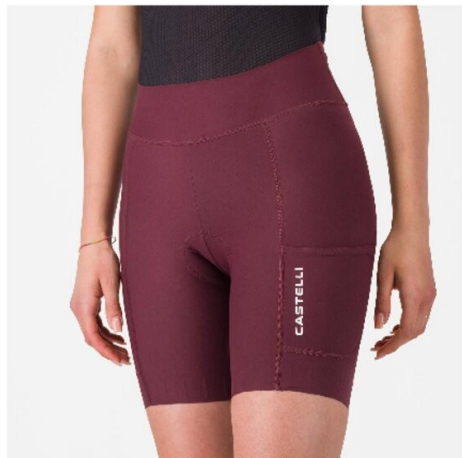
Regular

WINDPROOFNESS

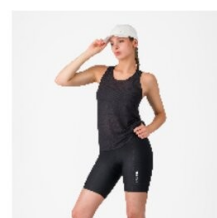


these shorts deliver just enough comfort for casual riding while staying comfortable and flexible when the bike isn't the focus.

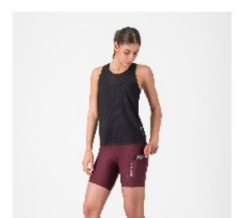
Performance short for adventure and style  
 Espresso Doppio fabric for proven comfort  
 New W Summer Travel seat pad provides comfort without bulk  
 Shorter length for confident off-the-bike style  
 Silicone gripper elastic at leg endings  
 Stretch fabric allows natural movement on and off the saddle  
 2 side pockets



204  
ELMWOOD



010  
BLACK



625  
DEEP BORDEAUX

# DESIGNED FOR THE FEMALE CYCLIST

WHO VALUES  
COMFORT AND STYLE  
OVER SPEED

The Comfort Travel Short is built for freedom —  
on two wheels or two feet.

With a lighter seat pad, these shorts deliver  
just enough comfort for casual riding while  
staying comfortable and flexible when t  
he bike isn't the focus.

Perfect for café stops or full-day adventures  
with friends.



## DESIGNED FOR THE FEMALE CYCLIST

WHO VALUES  
COMFORT AND STYLE  
OVER SPEED



We took our Comfort Travel Short and layered it with a lightweight outer short to create the Movement Travel Short: the perfect blend of cycling function and everyday style.

Designed for riders who want comfort in the saddle without the full Lycra look, this short gives you the freedom to move seamlessly from the bike to the rest of your day. Whether you're pedaling to a friend's house, or exploring all weekend, this hybrid short delivers low-key performance with a laid-back feel.

# MOVEMENT TRAVEL SHORT

4526064

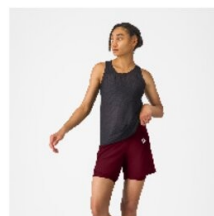
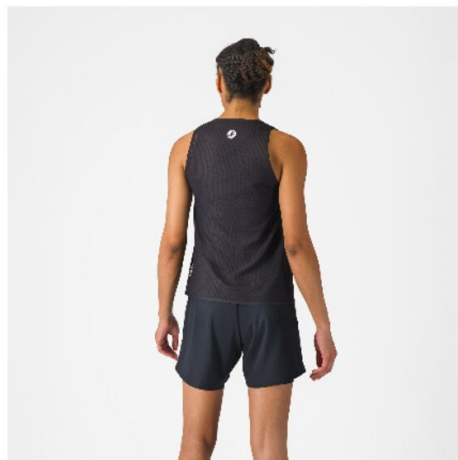


SIZES	T° RANGE
XS S M L XL	15-35 °C / 59-95 °F
WEIGHT	FIT
167 g	Regular
WATERPROOFNESS	WINDPROOFNESS

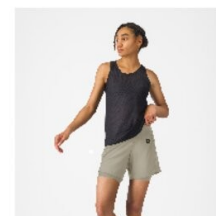


low-key performance with a laid back feel.

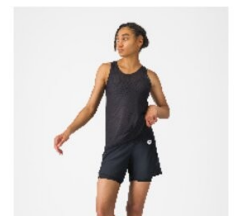
Espresso short comfort with integrated overshirt  
 Ultralight stretch woven taffeta outer shell that  
 you'll hardly notice  
 New W Summer Travel seat pad provides comfort  
 without bulk  
 Mid-leg length for confident off-the-bike style  
 2 side pockets and zippered rear pocket  
 Stretch fabric allows natural movement on and off  
 the saddle



625  
DEEP BORDEAUX



053  
SILVER MOON



010  
BLACK

# COMFORT TRAVEL MESH TOP

4526065



SIZES	T° RANGE
XSSMLXL	15-35 °C / 59-95 °F
WEIGHT	FIT
60 g	Regular
WATERPROOFNESS	WINDPROOFNESS

the Mesh Tee combines lightweight breathability with casual versatility

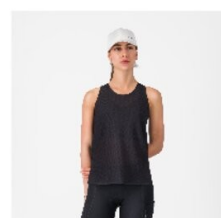
Ultralight mesh fabric for breathability and all-day comfort  
Relaxed fit designed for freedom of movement  
Ideal for layering over a crop top or sports bra  
Quick-drying and moisture-wicking for hot days on or off the bike



053  
SILVER MOON



505  
FADED ROSE



010  
BLACK

# TRAVEL CAP

4526066



SIZES

UNI

this baseball cap is a perfect everyday companion

100% polyester for wicking and easy cleaning  
Adjustable fit



010  
BLACK



101  
WHITE

WOMEN'S HOT WEATHER PRODUCTS



# CLIMBER'S A/C W JERSEY

4526052



SIZES	T° RANGE
XSS M L XL	22-40 °C / 71-104 °F
WEIGHT	FIT
116 g	Race
WATERPROOFNESS	WINDPROOFNESS

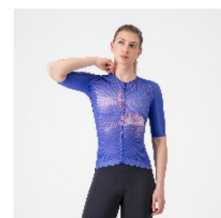
**CORSA**

Light. Dry. Fast

CFD-based fabric placement and seam construction  
 Engineered rapid cooling, light weight, and aero efficiency  
 Airflow shoulder construction  
 Flusso 3D fabric on front  
 StradaPro 3D back for breathability  
 Stretch sleeves with raw-cut edges  
 Elastic around waist to keep jersey in place and support pockets  
 YKK® Vislon® zipper  
 UPF 13



424  
 BELGIAN BLUE/NEON  
 COBALT-SILVER



501  
 ULTRAVIOLET/PURPLE  
 MIST-PINK

# UPF W JERSEY

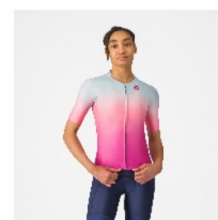
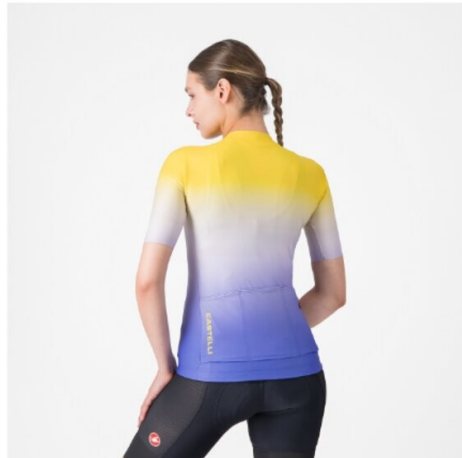
4526061



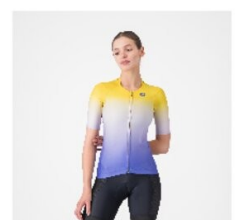
SIZES	T° RANGE
XS S M L XL	18-35 °C / 64-95 °F
WEIGHT	FIT
123 g	Tailored
WATERPROOFNESS	WINDPROOFNESS

For sunny days when you want that extra protection

- UPF 50+ rated fabrics
- Front fabric slightly perforated for better breathability
- Raw-cut sleeve endings for comfort
- Higher collar on back and longer sleeves for added sun protection
- 3 rear cargo pockets and additional zippered security pocket
- Elastic at waist to keep jersey in place and support loaded pockets
- YKK® Vislon® zipper for easy use



486  
WINTER SKY/VIOLET PINK



712  
MANGO MOJITO/ULTRAVIOLET

# A/C W BIBSHORT

4525043



SIZES

XSSMLXL

WEIGHT

185 g

WATERPROOFNESS

T° RANGE

22-40 °C / 71-104 °F

FIT

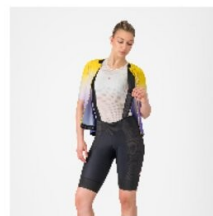
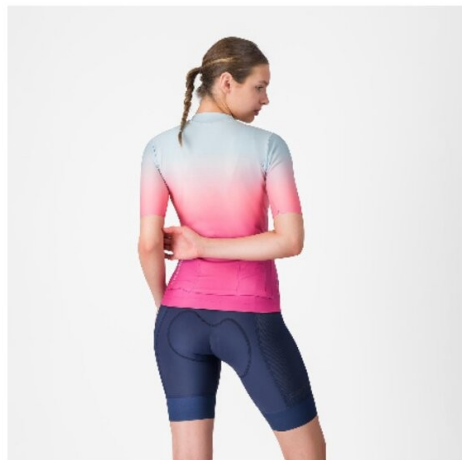
Tailored

WINDPROOFNESS

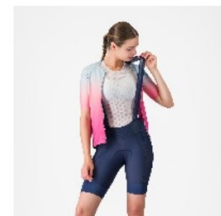
progetto X

Lightweight bibshort for hot days, with extra breathability.

Closed-knit mesh side panels for maximum breathability and sun protection  
 Mesh grippers with integrated silicone  
 Minimalist mesh bib straps  
 Progetto X2 Air Seamless Donna seat pad  
 UPF 50+



010  
BLACK



424  
BELGIAN BLUE





WOMEN'S UNLIMITED

# UNLIMITED PRO 2 W JERSEY

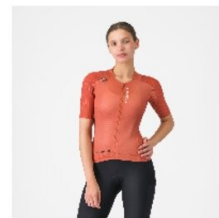
4526113



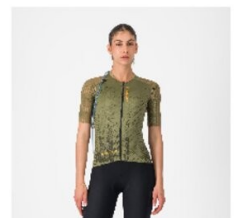
SIZES	T° RANGE
XS S M L XL	18-35 °C / 64-95 °F
WEIGHT	FIT
134 g	Race
WATERPROOFNESS	WINDPROOFNESS

The Unlimited Pro 2 Jersey is Castelli's answer to the evolving demands of gravel athletes who want every marginal gain, without sacrificing the soul of the sport.

- Close-to-body, aerodynamic fit — ideal for high-intensity gravel riding and racing
- CFD-based fabric placement and seam construction
- Engineered shoulder fabric used specifically to reduce drag at race speeds
- Bonded sleeve endings for comfort
- Castelli-engineered Air\_0 Stretch fabric on body for breathability, comfort, and performance
- 3 rear pockets and zippered security pocket
- Hydration pocket for 1.5l bladder and hose loops (Hydration Pack not included)



655  
PAPRIKA



302  
FOREST GREEN/ELMWOOD/VIVID ORA

# UNLIMITED 2 W JERSEY

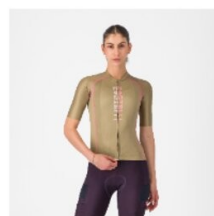
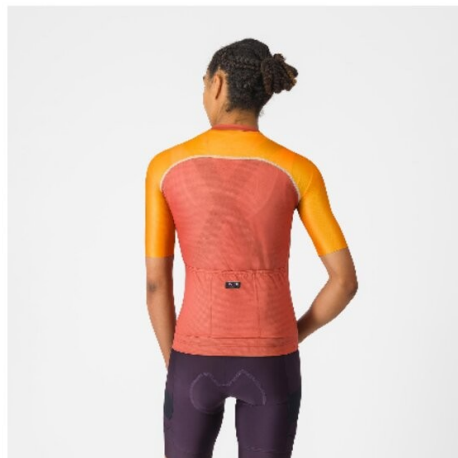
4526069



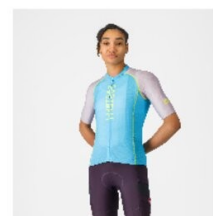
SIZES	T° RANGE
X S S M L XL	18-35 °C / 64-95 °F
WEIGHT	FIT
100 g	Regular
WATERPROOFNESS	WINDPROOFNESS

The Unlimited 2 W Jersey delivers all the performance you need for hours out on the bike

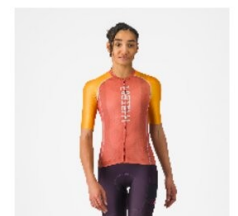
- 3 back pockets with fourth zippered security pocket for valuables
- Full-length YKK® Vislon® zipper
- Elastic at waist with silicone to keep jersey in place
- Contrast flatlock stitching gives a modern look



204  
ELMWOOD/ROSA GIRO-LIGHT  
PINK



272  
NEON COBALT/PURPLE  
MIST-LIGHT



655  
PAPRIKA/VIVID ORANGE-WINTER  
SR

# FLY DIRECT W VEST

4525057

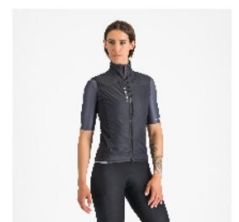
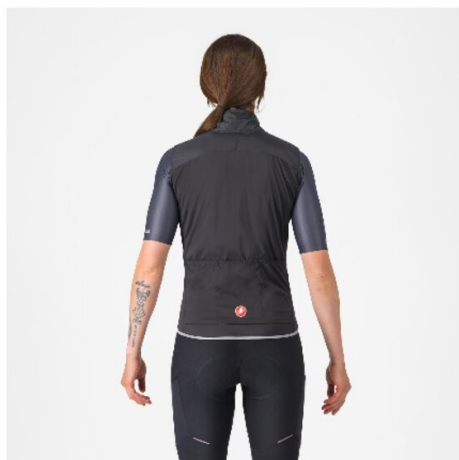


SIZES	T° RANGE
XSS M L XL	10-19 °C / 50-66 °F
WEIGHT	FIT
139 g	Regular
WATERPROOFNESS	WINDPROOFNESS
	Front



Packable lightweight thermal vest with Polartec® Alpha® Direct insulation.

Super-lightweight construction with amazing warmth, protection, and packability  
 Ultralightweight windproof microfiber woven outer shell with DWR treatment  
 Polartec® Alpha® Direct insulation for maximum loft and insulation with minimal bulk  
 Top- and bottom-opening YKK® Vislon® zipper  
 3 back pockets  
 Reflectivity at waist for added visibility



010  
BLACK

# UNLIMITED ENDURANCE W DT BIBSHORT

4525058

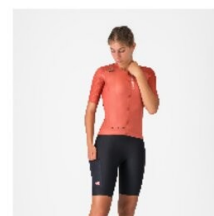
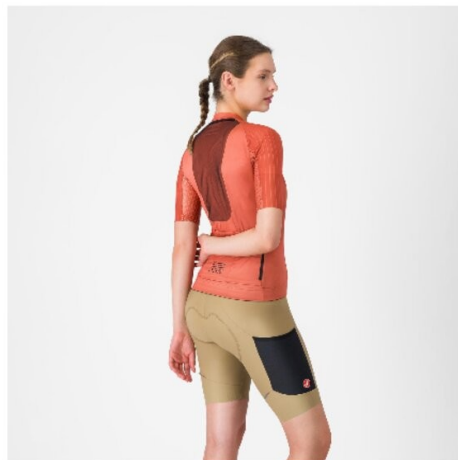


SIZES	T° RANGE
XSS M L XL	16-35 °C / 60-95 °F
WEIGHT	FIT
199 g	Tailored
WATERPROOFNESS	WINDPROOFNESS

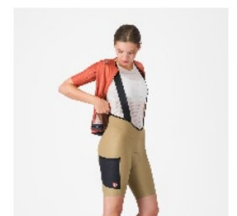


Everything you need to meet the demands of the longest gravel rides. Unparalleled comfort and extra storage.

- Espresso Doppio fabric provides comfort and perfect fit
- Soft, stretchy elastic bib straps provide comfortable support
- Drop-tail construction
- Mesh side pockets with elastic closure
- Silicone gripper at leg endings for secure placement
- Progetto X2 Air Seamless Donna seat pad
- Reflective tabs for added safety



010  
BLACK



204  
ELMWOOD/BLACK

# UNLIMITED CARGO W BIBSHORT

4523048

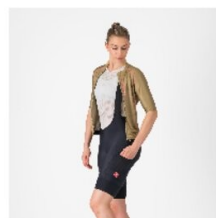
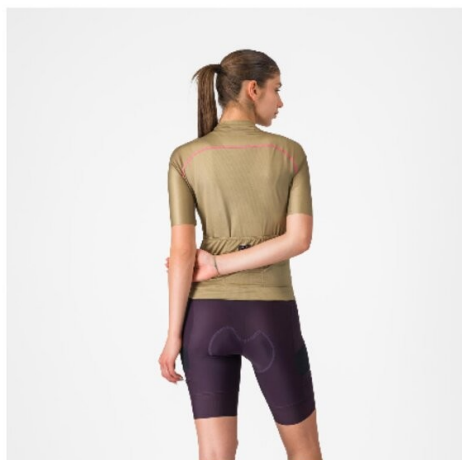


SIZES	T° RANGE
XS S M L XL	15-35 °C / 59-95 °F
WEIGHT	FIT
230 g	Regular
WATERPROOFNESS	WINDPROOFNESS

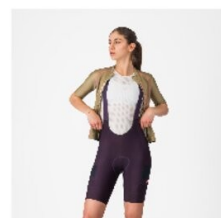
**KISS**air<sup>2</sup>

Equally at home on tarmac or gravel, the Unlimited Cargo Bibshort knows no limits. This cargo-pocket short is ready for your next adventure.

Made for fast riding on unlimited terrain  
 Affinity Pro Lycra® fabric on inside of leg for outstanding stretch and rebound  
 Drop-tail bib construction for more convenient nature breaks  
 2 cargo-style side pockets with flap over top to keep stuff from falling out  
 KISS Air2 Donna seat pad for long-distance comfort  
 GIRO4 leg grippers



010  
BLACK



513  
DARK NIGHT SHADE

# UNLIMITED ADVENTURE BAGGY W SHORT

4525059



SIZES

XSSMLXL

WEIGHT

175 g

WATERPROOFNESS

T° RANGE

16-35 °C / 60-95 °F

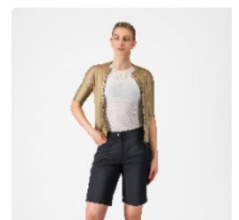
FIT

Regular

WINDPROOFNESS


Lightweight, durable baggy short with extra storage for all of your adventure rides.

Stretch woven nylon for comfort, stretch, and abrasion resistance  
 PFAS-free DWR finish  
 Elastic waist  
 Button-and-clasp fly closure with zipper fly  
 2 front pockets  
 Zippered cargo pocket  
 UPF 50+



010  
 BLACK



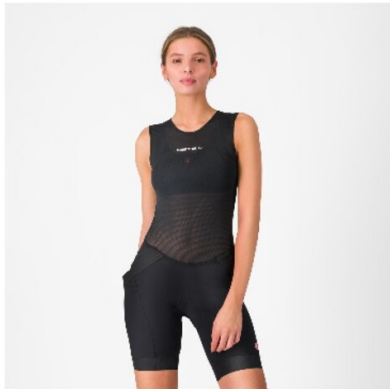


WOMEN'S BASE LAYERS

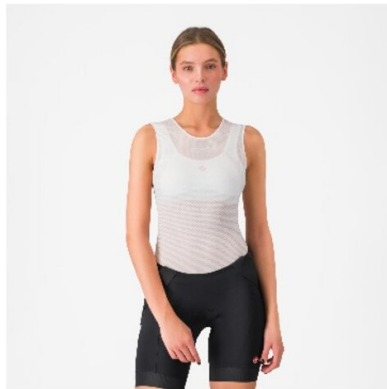
CASTELLI CYCLING

# PRO MESH W SLEEVELESS

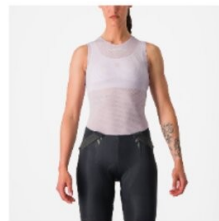
4524075



010  
BLACK



001  
WHITE



538  
PURPLE MIST

SIZES

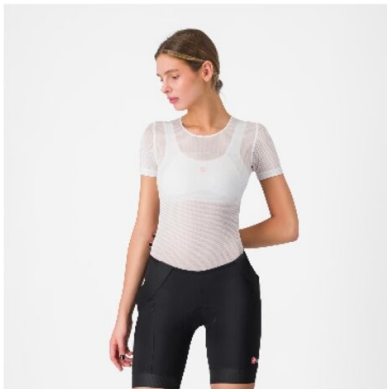
X S M L XL

3D mesh fabric for excellent moisture management  
Sublimated print graphic  
Waist hem stays flat under shorts

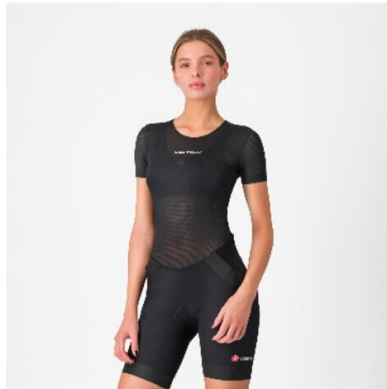
CASTELLI CYCLING

# PRO MESH W SHORT SLEEVE

4524076



001  
WHITE



010  
BLACK



538  
PURPLE MIST

SIZES

X S M L XL

3D mesh fabric for excellent moisture management  
Sublimated print graphic  
Waist hem stays flat under shorts

CASTELLI CYCLING

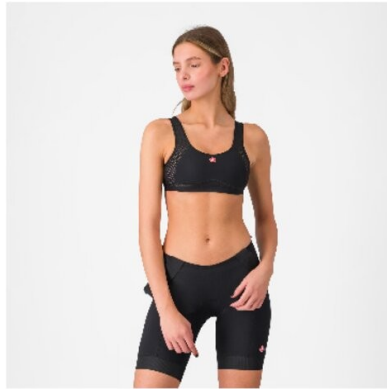
# ROSSO CORSA BRA

4518550

ROSSO CORSA



001  
WHITE



010  
BLACK

SIZES

XS S M L XL

Superlight stretch fabric perfect for cycling  
Mesh inserts for extreme breathability keep you cool and dry  
Back hook-and-eye closure with 3-position regulation for easy on and off  
Molded cups with full coverage  
Medium support thanks to contoured seams and underbust elastic for enhanced fit and support



WOMEN'S ACCESSORIES



# PREMIO EVO W GLOVE

4525060



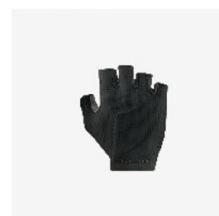
SIZES

XS S M L XL

Same stretch woven fabric on back of hand as the jersey for a perfect color match  
Stretch woven back of hand for comfort and support  
Seamless synthetic palm with silicone grip  
Easy on-off wrist closure  
Castelli Damping System (CDS) protects median nerve  
UPF 50



860  
VORTEX GRAY



010  
BLACK



529  
DEEP PURPLE

CASTELLI CYCLING

# ESPRESSO W GLOVE

4525061



SIZES

XS S M L XL

Same Air-0 stretch fabric as your favorite Espresso Jersey for a perfect color match  
Air-0 stretch back of hand for breathability and comfort  
Reflective Castelli logo  
Easy on-off wrist closure  
Padded palm with silicone grip  
Castelli Damping System (CDS) protects median nerve  
UPF 30



424  
BELGIAN BLUE



085  
SILVER MOON



085  
LIGHT BLACK



065  
IVORY



538  
PURPLE MIST



501  
ULTRAVIOLET

# COMPETIZIONE W GLOVE

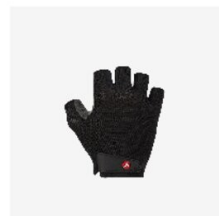
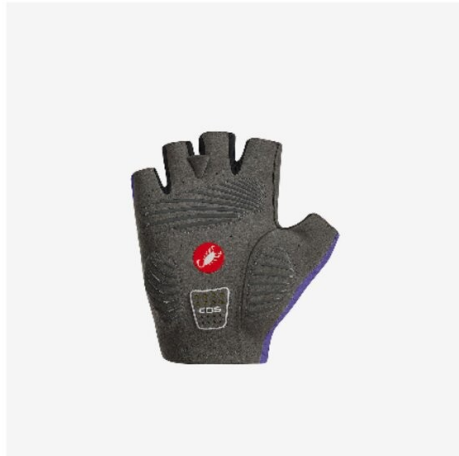
4526077



SIZES

XS S M L XL

Synthetic palm with medium-density foam padding  
Silicone grip pattern on palm  
Velcro wrist closure for easy on/off  
Stretch back of hand with excellent breathability  
Castelli Damping System (CDS) to protect median nerve



010  
BLACK



053  
SILVER MOON



501  
ULTRAVIOLET

# PERFETTO RoS W GLOVE

4519549



SIZES

S M L XL



Engineered with GORE-TEX INFINIUM™ WINDSTOPPER® Stretch Warm fabric and reduced-seam technology  
Fleece lined for warmth  
Castelli Damping System (CDS) protects median nerve  
Neoprene stretch wrist insert for easy on and off  
Reflective details  
Silicone zones on palm for extra grip  
Touchscreen technology at fingertip



010  
BLACK

# PREMIO EVO W 12 SOCK

4525062



SIZES

S/M/L/X

Premio nylon for softness and comfort  
Highly breathable and durable  
Hidden Castelli logo  
Premio stripe on top to complete your Premio kit  
96% nylon, 4% elastane  
12 cm cuff



010  
BLACK



001  
WHITE

# ESPRESSO 2 W 12 SOCK

4525063



SIZES

S/M/L/X

Developed to match your Espresso kit  
Ideal sock for any ride  
Durable and breathable construction  
Nylon/elastane mix for optimal comfort and fit  
85% nylon, 15% elastane  
12 cm cuff



001  
WHITE



010  
BLACK



538  
BELGIAN BLUE



538  
PURPLE MIST



053  
SILVER MOON



501  
ULTRAVIOLET



025  
ROSA GIRO

CASTELLI CYCLING

## TONAL LOGO W 12 SOCK

4526071



501  
ULTRAVIOLET/ROSA GIRO-PURPLE M



712  
MANGO MOJITO/ULTRAVIOLET-PURPL



424  
BELGIAN BLUE/SILVER GRAY-NEON



563  
VIOLET PINK/WINTER SKY-ROSA GI

SIZES

S/M L/X

Polypropylene yarns that don't absorb moisture  
Mix of textures for breathability and cushioning  
Midfoot support band  
12 cm height

CASTELLI CYCLING

## ANIMA 7 SOCK

4525065



001  
WHITE



010  
BLACK

SIZES

S/M L/X

Durable and breathable construction  
Nylon/elastane mix for optimal comfort and fit  
85% polyamide, 15% elastane  
7 cm cuff

CASTELLI CYCLING

# INVISIBLE SOCK

4516062



001  
WHITE




010  
BLACK

SIZES

S/M/L/X

Q Skin yarns feature bacteriostatic silver ions  
Diaphanous web mesh on top of foot  
Midfoot support band  
No ankle cuff to be practically invisible  
Heel tab to prevent rubbing on the back of cycling shoe



A blurred, high-speed photograph of a woman's hair and clothing in motion, likely during a performance or exercise. The image is dominated by streaks of yellow, green, and brown, suggesting rapid movement. A white text overlay is centered horizontally across the middle of the image.

WOMEN'S ALL WEATHER PROTECTION

# PERFETTO RoS 3 W JACKET

4525557



SIZES	T° RANGE
XS S M L XL	4-14 °C / 39-57 °F
WEIGHT	FIT
208 g	Tailored
WATERPROOFNESS	WINDPROOFNESS
Light Rain	Front and Back



The perfect jacket for most conditions: wind proof, highly water resistant, stretch fit with industry leading breathability thanks to Polartec® AirCore™ fabric.

The jacket that does it all: protects from wind and rain while being highly breathable and stretchy for comfort

Uninsulated for cool conditions, can extend to cold conditions with an extra insulation layer

Exclusive 150 g Polartec® AirCore™ electrospun air-permeable membrane gives industry-leading breathability

Reflective taped shoulder seams for extra rain protection

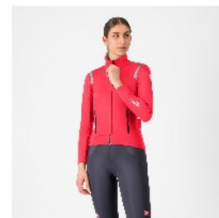
Top- and bottom-opening YKK® Vislon® zipper for easy sliding, covered for additional wind and rain protection

Zippered ventilation openings on sides of chest

3 rear pockets with drain holes

Longer tail for coverage from wheel spray

Reflective piping at bottom of pockets



081  
HIBISCUS/BLACK REFLEX



085  
LIGHT BLACK/SILVER REFLEX

# PERFETTO AIR W VEST

4525555

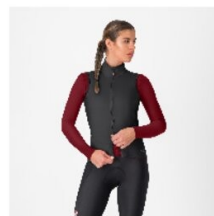
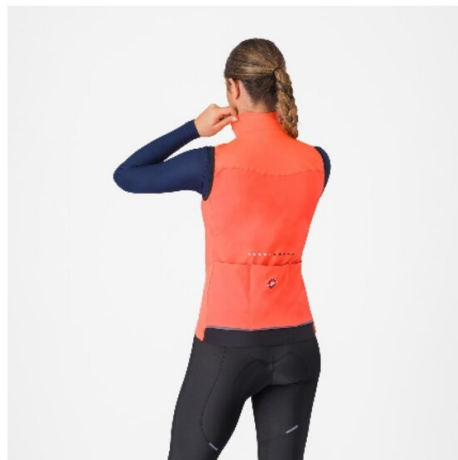


SIZES	T° RANGE
XS S M L XL	10-18 °C / 50-64 °F
WEIGHT	FIT
160 g	Tailored
WATERPROOFNESS	WINDPROOFNESS
Wet Roads	Front and Back

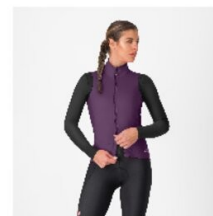


The perfect vest for cool conditions. Castelli Ristretto technology insulates while allowing restricted airflow to keep your core body dry.

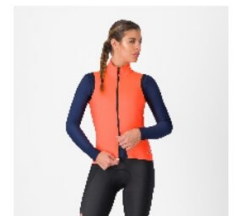
Mid-weight vest for cool temperatures provides moderate insulation with excellent breathability  
 Castelli Ristretto Lite fabric technology for unparalleled breathability, warmth, and dryness with PFAS-free DWR treatment  
 Stretch woven back for stretch with excellent breathability  
 Top- and bottom-opening YKK® Vislon® easy-sliding zipper  
 3 lie-flat pockets with security lip inside  
 Reflective piping at bottom of pocket for visibility  
 Castelli partnered with fabric innovator ITTTAI® to create an exclusive fabric, combining advanced stretch, breathability, and water protection through ITTTAI®'s membrane and lamination expertise



085  
LIGHT BLACK



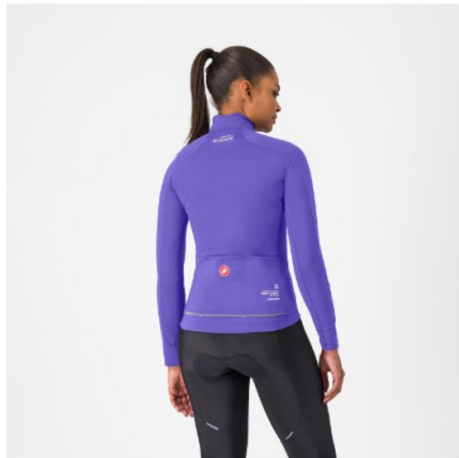
502  
NIGHT SHADE



288  
BRILLIANT PINK

# DO.DI.CI. W JACKET

4525554



SIZES	T° RANGE
XS S M L XL	8-15 °C / 46-59 °F
WEIGHT	FIT
212 g	Race
WATERPROOFNESS	WINDPROOFNESS
Wet Roads	Front and Back



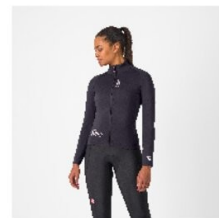
The ultimate jacket for higher intensity rides in cool conditions. Castelli Ristretto technology allows a small amount of air to come in and evaporate sweat, 12 times more than previous technology.

Next-generation breathability in a stretch jacket that blurs the line between a jersey and a jacket, for cool to mild conditions

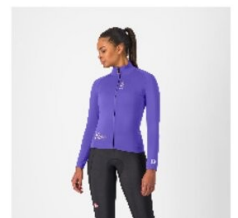
Exclusive Castelli Ristretto technology with engineered air permeability keeps most wind out, allowing in just enough to provide exceptional breathability — 12 times more than previous Castelli Perfetto jackets

Close-to-body stretch race fit doesn't feel constricting, thanks to Ristretto stretch fabrics  
Minimalist construction for speed and comfort  
YKK® Vislon® zipper for easy sliding  
3 rear pockets

Reflective piping at bottom of pocket for visibility  
Castelli partnered with fabric innovator ITTTAI® to create an exclusive fabric, combining advanced stretch, breathability, and water protection through ITTTAI®'s membrane and lamination expertise



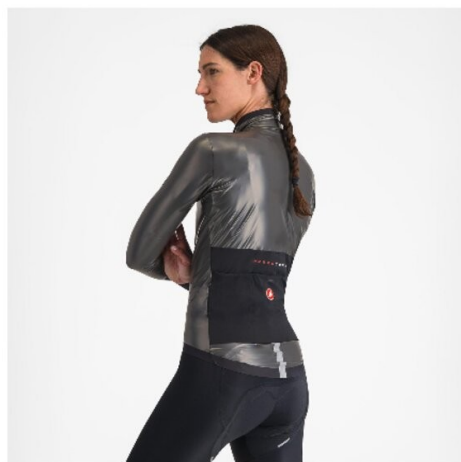
085  
LIGHT BLACK



501  
ULTRAVIOLET

# GABBA R W JACKET

4524576

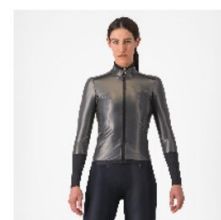


SIZES	T° RANGE
XS S M L XL	4-18 °C / 39-64 °F
WEIGHT	FIT
0 g	Race
WATERPROOFNESS	WINDPROOFNESS
Fully Waterproof	Front/Sleeves

**PRO-CORSA**

The next generation of Foul Weather Race Equipment has arrived. The Gabba R is more protective and more aerodynamic than ever before. It's made to keep up with the demands of the pro peloton, where every watt counts. It's tested in the wind tunnel as our fastest jacket, so you know you aren't sacrificing any speed in order to stay dry.

Castelli Stretch Microshell 2-layer ultralight waterproof breathable fabric with PFC-free external microporous polyurethane membrane  
 Stretch wrist closure to keep water out  
 YKK® Vislon® waterproof zipper  
 Full taped seams for total waterproof construction  
 3 rear mesh pockets  
 Drop tail with reflective stripe  
 Castelli partnered with fabric innovator ITTTAI® to create an exclusive fabric, combining advanced stretch, breathability, and water protection through ITTTAI®'s membrane and lamination expertise.

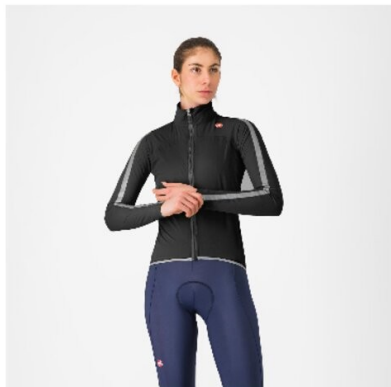


010  
BLACK

CASTELLI CYCLING

## ULTRA W RAIN CAPE

4525567



010  
BLACK/SILVER REFLEX



SIZES

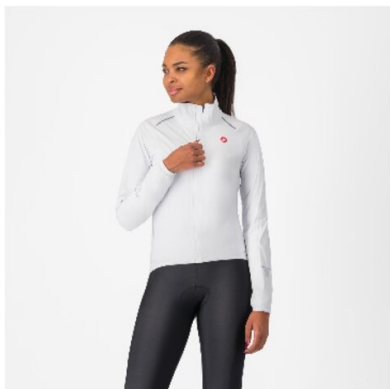
XS S M L XL

Waterproof packable jacket  
2-layer stretch form-fit Polartec® Power Shield™  
RPM fabric  
PFAS-free and PFC-free DWR treatment  
Taped seams to keep water out  
Long tail for added protection from wheel spray  
Packs into internal pocket for easy carrying when on the bike  
YKK® zipper for easy use  
Reflective piping for added visibility  
Contains recycled fibers and can be recycled

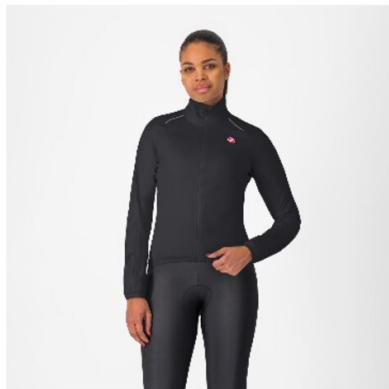
CASTELLI CYCLING

## EMERGENCY 3 W RAIN JACKET

4525535



001  
WHITE



085  
LIGHT BLACK

SIZES

XS S M L XL

Fully waterproof 3-layer shell jacket, highly packable, with performance stretch fit  
New Castelli 3-layer Deluge fabric with 20,000 mm water column is thin and light for packability  
Knit polyester layer inside is comfortable next to skin  
Fit is close to body but not tight, and the fabric's stretch makes sure it doesn't bind  
Highly packable to fit into a jersey pocket or bikepacking bag  
All-day water protection with taped seams  
360° reflectivity  
Waterproof zipper

CASTELLI CYCLING

# SQUALL SHELL W JACKET

4524539



870  
SILVER GRAY/BLACK



085  
LIGHT BLACK/SILVER GRAY

SIZES

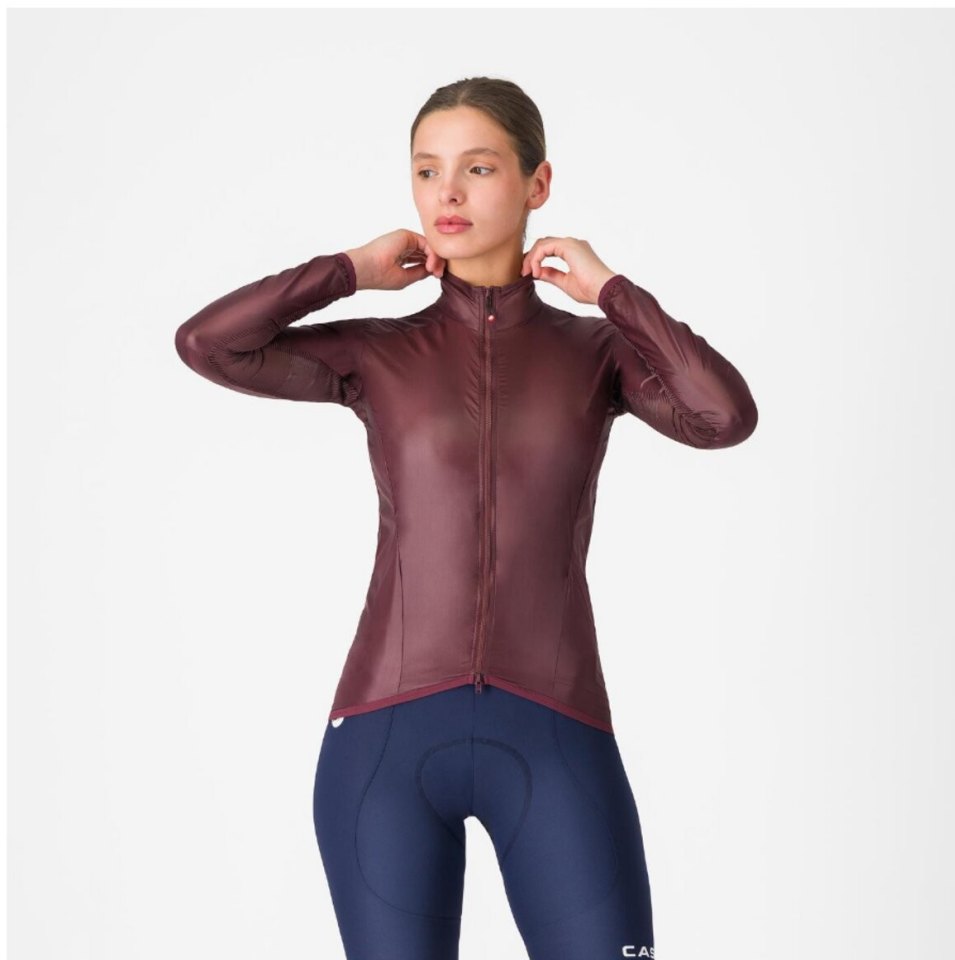
XS S M L XL

---

Lightweight construction for packability  
Stretch 2-layer fabric with waterproof membrane  
Taped seams  
Reflective stripe on back for added visibility  
Elastic at wrist and waist to keep out water and cold air

# ARIA SHELL 2 W JACKET

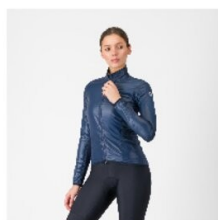
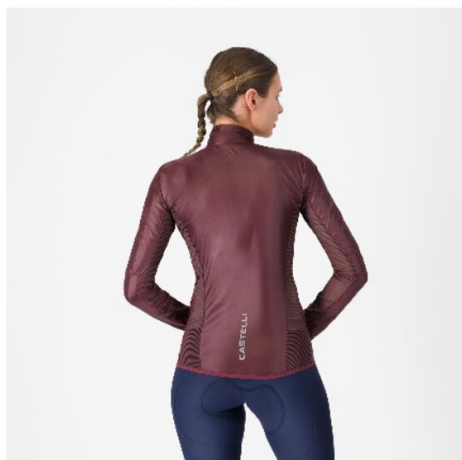
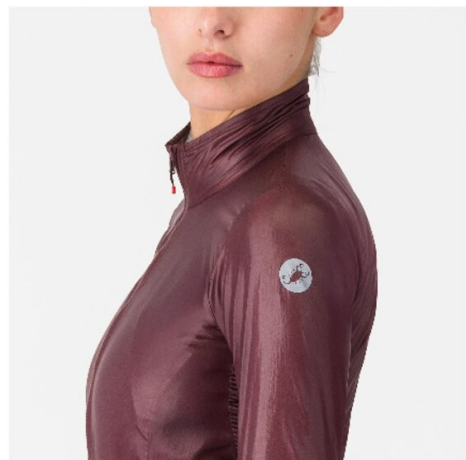
4526072



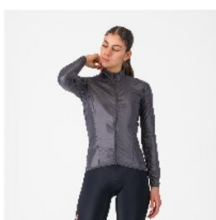
SIZES	T° RANGE
XSS M L XL	10-18 °C / 50-64 °F
WEIGHT	FIT
100 g	Tailored
WATERPROOFNESS	WINDPROOFNESS
	Front/Sleeves

An extremely light and packable wind shell that fits close to body, with stretch breathability panels, allowing you extend the temperature range of your favorite Castelli pieces.

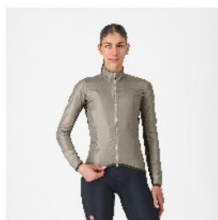
- Ultralight windproof woven microfiber front and back
- Striped mesh fabric at sides and back of sleeves is stretchy to prevent fabric flapping in wind
- Folds up extremely small
- Integrated stuff sack
- YKK® Vislon® top- and bottom-opening zipper
- Reflective Castelli logos



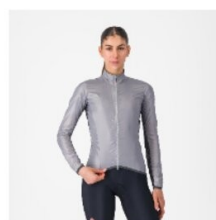
424  
BELGIAN BLUE



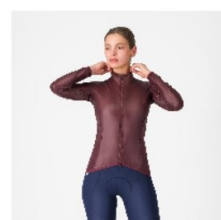
030  
DARK GRAY



294  
CLAY



870  
SILVER GRAY



625  
DEEP BORDEAUX

# ARIA 2 W VEST

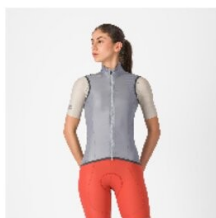
4526073



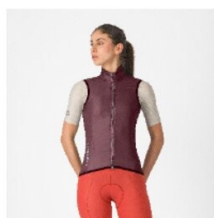
SIZES	T° RANGE
XSSMLXL	10-18 °C / 50-64 °F
WEIGHT	FIT
79 g	Tailored
WATERPROOFNESS	WINDPROOFNESS
	Front

Our lightest and most packable wind shell that fits close to body with a stretch breathable back. It effectively blocks wind on the front without causing overheating.

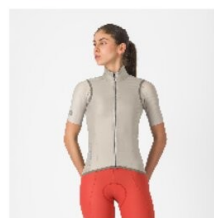
Ultralight windproof woven microfiber front  
 Striped mesh fabric at sides and back is stretchy to prevent fabric flapping in wind  
 Folds up extremely small  
 Integrated stuff sack  
 YKK® Vislon® top- and bottom-opening zipper  
 Reflective Castelli logos



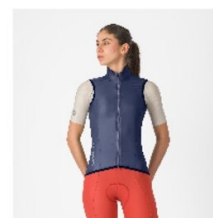
870  
SILVER GRAY



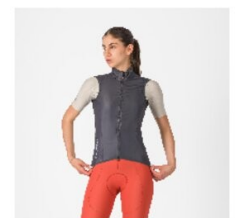
625  
DEEP BORDEAUX



294  
CLAY



424  
BELGIAN BLUE



030  
DARK GRAY

# SQUADRA STRETCH W JACKET

4521529



SIZES

XSS M L XL

T° RANGE

10-18 °C / 50-64 °F

WEIGHT

139 g

FIT

Regular

WATERPROOFNESS

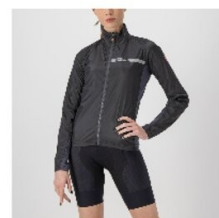
None

WINDPROOFNESS

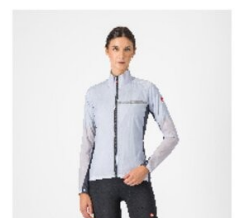
Front and Back

The Squadra Stretch shell keeps the wind off on cool-weather rides or long descents, while the stretch panels keep the jacket fitting close to body and eliminate flapping fabric.

Coated ripstop nylon front and back and front of sleeves to keep wind off  
Tightly knit stretch panels on sides and sleeves allow for perfect fit  
High collar to keep drafts out  
Reflective details on chest and lower back for low-light visibility



085  
LIGHT BLACK/DARK GRAY



870  
SILVER GRAY/DARK GRAY

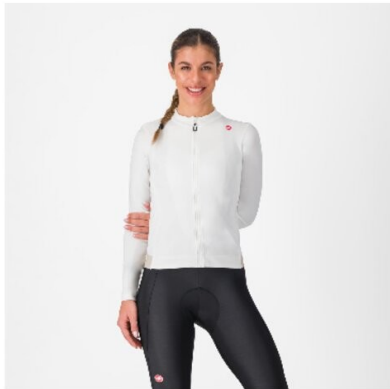
WOMEN'S 360 PRODUCTS



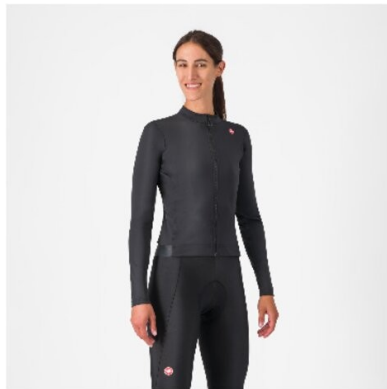
CASTELLI CYCLING

## ESPRESSO THERMAL W JERSEY

4524540



065  
IVORY/SILVER MOON



085  
LIGHT BLACK

SIZES

XS S M L XL

Luxuriously soft and warm fleece-lined fabric with stretch for comfort and perfect fit  
3 back pockets with 4th zippered security pocket for valuables  
Full-length YKK® Vislon® zipper with easy-use zipper pull  
Elastic at waist with silicone to keep jersey in place  
Reflective tab for added visibility

CASTELLI CYCLING

## ESPRESSO W DT BIBTIGHT

4524546



010  
BLACK

PROGETTO X<sup>2</sup>

SIZES

XS S M L XL

Thermoflex fabric for warmth, stretch, and comfort  
Drop Tail stretch bib straps for comfort and easy nature breaks  
Progetto X2 Air Seamless Donna seat pad for long-distance comfort  
Zipperless ankle to reduce bulk  
Reflective tab on back of leg

CASTELLI CYCLING

# ENTRATA W BIBTIGHT

4523567

PROGETTO X<sup>2</sup>



010  
BLACK

SIZES

XS S M L XL

Thermoflex fabric for warmth and comfort  
KISS Air2 Donna seat pad gives great cushioning  
without excessive bulk  
Mesh bib straps  
Ankle zippers for easy on/off  
Reflective panel below knee

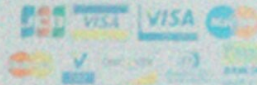


# AST - CAFFE'



DA NOI SI ACCETTANO PAGAMENTI IN:

SETEFI



# LOGO HOODY

4526079



SIZES

XS S M L XL XXL 3XL

T° RANGE

- °C / - °F

WEIGHT

588 g

FIT

Regular

WATERPROOFNESS

WINDPROOFNESS

It's cycling lifestyle, done right.

Relaxed drop-shoulder fit  
Castelli wordmark logo  
Elasticated ribbed cuff and bottom hem



006  
MELANGE GRAY



010  
BLACK

# LOGO SWEATSHIRT

4526080



SIZES

XS S M L XL XXL 3XL

T° RANGE

- °C / - °F

WEIGHT

466 g

FIT

Regular

WATERPROOFNESS

WINDPROOFNESS

It's cycling lifestyle, done right.

Relaxed fit  
Castelli wordmark logo  
Raglan sleeves for additional freedom of movement  
Elasticated ribbed cuff and bottom hem



424  
BELGIAN BLUE



006  
MELANGE GRAY

# CASTELLI ALPHA FLEECE HOODY

## 4526084



SIZES

XS S M L XL XXL 3XL

T° RANGE

- °C / - °F

WEIGHT

162 g

FIT

Regular

WATERPROOFNESS

WINDPROOFNESS



It's cycling lifestyle, done right. A relaxed fit hoodie made from Polartec Alpha Fabric.

Relaxed drop-shoulder fit  
Polartec® Alpha® 90 g



405  
ROCK BLUE



870  
SILVER GRAY/DARK GRAY

**TECHNICAL WHERE IT COUNTS.  
EFFORTLESS EVERYWHERE ELSE.**

We designed this hoodie to move seamlessly between travel days, race prep, and everyday life — bringing together advanced performance and street-ready style.

Made with Polartec® Alpha® 90, it delivers lightweight warmth, breathability, and next-level comfort, all wrapped in a clean, modern silhouette.

It's part of our new off-bike collection: garments built for those moments when you're not riding but still want to feel connected to the sport. Featuring our updated Castelli branding, this hoodie is understated, functional, and made to go everywhere you do.



# STONE LOGO TEE

4526081



SIZES

XS S M L XL XXL 3XL

TEMPERATURE RANGE

- °C / - °F

WEIGHT

215 g

FIT

Regular

WATERPROOFNESS

WINDPROOFNESS

the kind of tee you'll wear on the daily—because representing Castelli doesn't stop when the ride ends.

Relaxed fit  
Castelli wordmark logo  
Ribbed collar



001  
WHITE



010  
BLACK

# - TOAST - CAFFÈ'



You might not be on the bike—but you're still part of the team. This T-shirt is part of our new off-bike collection, designed for relaxed comfort before and after race day, or while traveling to your next ride.

Featuring our updated Castelli logo and wordmark, it's a clean expression of where we're headed as a brand—modern, confident, and connected to the culture of performance.

Cut with a relaxed fit and made from soft, premium cotton, it's the kind of tee you'll wear on the daily—because representing Castelli doesn't stop when the ride ends.

# INNOVATION LOGO TEE

4526082



SIZES

XS S M L XL XXL 3XL

T° RANGE

- °C / - °F

WEIGHT

189 g

FIT

Regular

WATERPROOFNESS

WINDPROOFNESS

the kind of tee you'll wear on the daily—because representing Castelli doesn't stop when the ride ends.

Relaxed fit  
Castelli wordmark logo  
Ribbed collar



010  
BLACK



006  
MELANGE GRAY

# SLEEVE LOGO LS TEE

4526083



SIZES

XS S M L XL XXL 3XL

T° RANGE

- °C / - °F

WEIGHT

246 g

FIT

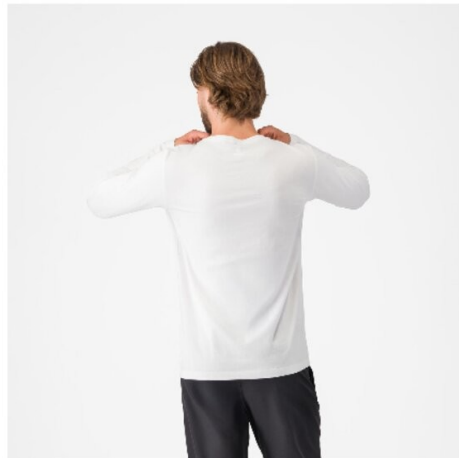
Regular

WATERPROOFNESS

WINDPROOFNESS

the kind of tee you'll wear on the daily—because representing Castelli doesn't stop when the ride ends.

Relaxed fit  
Castelli wordmark logo  
Ribbed collar



001  
WHITE

# MILANO 2 PANT

4526085



SIZES

XS S M L XL XXL 3XL

T° RANGE

- °C / - °F

WEIGHT

0 g

FIT

Regular

WATERPROOFNESS

WINDPROOFNESS

It's cycling lifestyle, done right.

Lightweight stretch woven material for comfort and athletic styling  
Front fly with snap closure  
Snap button closure at cuffs for easy on and off  
2 back welt pockets with zippers  
2 side pockets with internal phone pocket



010  
BLACK

# MILANO 2 SHORT

4526086



SIZES

XS S M L XL XXL 3XL

T° RANGE

- °C / - °F

WEIGHT

0 g

FIT

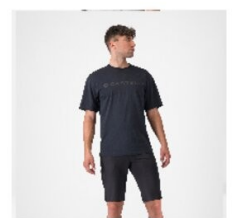
Regular

WATERPROOFNESS

WINDPROOFNESS

It's cycling lifestyle, done right.

Lightweight woven material for comfort and athletic styling  
Front fly with snap closure  
2 back welt pockets with zippers  
2 side pockets with internal phone pocket  
Above-the-knee length



010  
BLACK

# CLASSICO PUFFY JACKET

4525548



SIZES

XS S M L XL XXL 3XL

WEIGHT

547 g

WATERPROOFNESS

T° RANGE

- °C / - °F

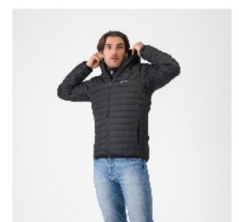
FIT

Regular

WINDPROOFNESS

Hooded synthetic down puffy jacket for light weight warmth. Good for casual use, bike packing, recovery.

Lightweight warm synthetic down hooded puffy casual jacket  
 Lightweight and warm 100-130 g polyester synthetic down insulation  
 Windproof 80 g/m<sup>2</sup> 100% polyester woven outer fabric with PFAS-free water-repellent finish  
 Side-seam zippered pockets are fleece lined to keep hands warm  
 YKK® zippers  
 Reflective wordmark on chest



010  
BLACK

# CLASSICO FLEECE JACKET

4525550



SIZES

XS S M L XL XXL 3XL

WEIGHT

503 g

WATERPROOFNESS

T° RANGE

- °C / - °F

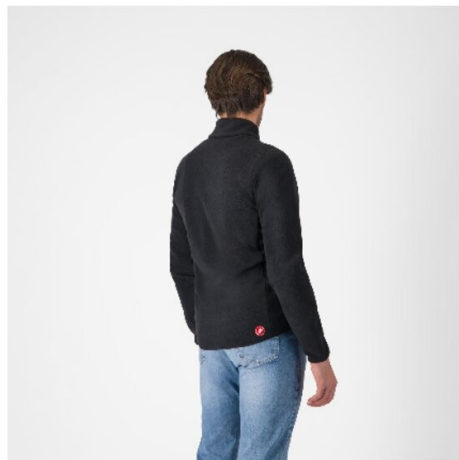
FIT

Regular

WINDPROOFNESS

Warm polyester zip fleece for comfortable lounging, recovery, and layering.

Fleece jacket for staying warm inside or outdoors  
Extra-warm 292 g/m<sup>2</sup> 100% polyester brushed fleece  
Zippered pockets at side seams and on chest  
YKK® zippers



010  
BLACK

CASTELLI CYCLING

# CASUAL SOCK

4526089



SIZES

S/M L/X XXL

60% polyester / 30% polyamide / 10% elastane  
Summer weight



010  
BLACK



001  
WHITE

CASTELLI CYCLING

# BASEBALL CAP

4526111



SIZES

UNI


100% polyester for wicking and easy cleaning  
Adjustable fit



010  
BLACK



424  
BELGIAN BLUE

A photograph of a locker room. The lockers are arranged in rows, with some having white doors and others having dark doors. A red vertical element is visible in the background. The floor is highly reflective, showing a distorted, wavy reflection of the lockers and the text. The text "CASTELLI WOMEN'S OFF-BIKE" is overlaid in white, uppercase letters across the middle of the image.

CASTELLI WOMEN'S OFF-BIKE



O CASTELLI

An error occurred on this page, please send this file to help@

# LOGO W TEE

4526105



SIZES

XSSMLXL

WEIGHT

159 g

WATERPROOFNESS

T° RANGE

- °C / - °F

FIT

Regular

WINDPROOFNESS

It's cycling lifestyle, done right.

Relaxed drop shoulder  
Female-specific cropped fit  
Castelli wordmark logo



006  
MELANGE GRAY



001  
WHITE

# CLASSICO W PUFFY JACKET

4525552



SIZES	T° RANGE
XSS M L XL	- °C / - °F
WEIGHT	FIT
460 g	Regular
WATERPROOFNESS	WINDPROOFNESS

Hooded synthetic down puffy jacket for light weight warmth. Good for casual use, bike packing, recovery.

Lightweight warm synthetic down hooded puffy casual jacket  
Lightweight and warm 100-130 g polyester synthetic down insulation  
Windproof 80 g/m2 100% polyester woven outer fabric with PFAS-free water-repellent finish  
Side-seam zippered pockets are fleece lined to keep hands warm  
YKK® zippers  
Reflective wordmark on chest



010  
BLACK

# CLASSICO W FLEECE JACKET

4525553



SIZES

XSSMLXL

WEIGHT

398 g

WATERPROOFNESS

T° RANGE

- °C / - °F

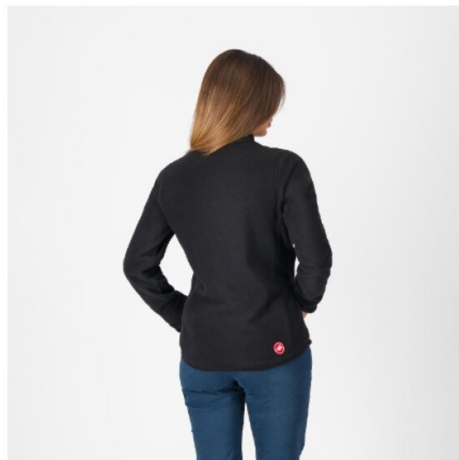
FIT

Regular

WINDPROOFNESS

Warm polyester zip fleece for comfortable lounging, recovery, and layering.

Fleece jacket for staying warm inside or outdoors  
Extra-warm 292 g/m<sup>2</sup> 100% polyester brushed fleece  
Zippered pockets at side seams and on chest  
YKK® zippers



010  
BLACK

MEN'S TRIATHLON





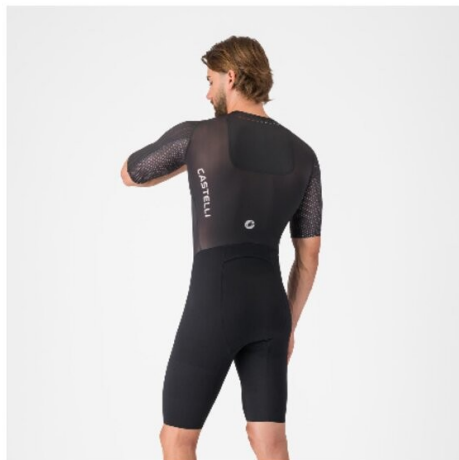
ENGINEERED FOR  
YOUR FASTEST  
RACE YET





# PR 3 SPEED SUIT

8626114

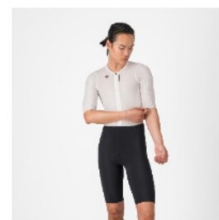


SIZES	T° RANGE
XS S M L XL XXL 3XL	18-35 °C / 64-95 °F
WEIGHT	FIT
183 g	Race
WATERPROOFNESS	WINDPROOFNESS

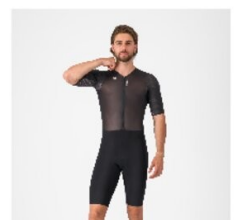
**KISS TRI** **ROBIC CORSA**

Optimized for speed. Built for comfort. Made to break your PR.

Pushing the limits: Our fastest, most comfortable race suit yet  
 CFD-driven design: Optimized fabric placement and seam construction using advanced CFD (computational fluid dynamics) analysis for maximum aerodynamic performance  
 Engineered ribbed sleeves: Specialized ribbed fabric on the sleeves reduces drag at race speeds, delivering significant savings in CdA  
 Internal neck ice pocket: Strategically placed pocket to hold ice to help regulate body temperature in extreme heat  
 Asymmetric GPS pocket: Discreetly placed on the neck for pro-level GPS tracking without affecting aerodynamics  
 Premio-based shorts: Seamless comfort and exceptional aerodynamics using our proven Premio fabric technology  
 Ultralight upper body: 50-denier fabric — the thinnest, smoothest we've ever used, for unmatched lightness and aerodynamic efficiency  
 Active cooling: Designed to keep you cool during the run, with fabric that enables moisture to evaporate directly next to the skin  
 Integrated rear pocket: Covered storage for gels or energy bars, with easy access and zero drag  
 KISS Tri pad: Designed for comfort and performance across all triathlon disciplines



101  
ICE WHITE/BLACK



010  
BLACK

When every second counts, the PR 3 Speed Suit is built to help you leave limits behind. Designed for athletes who aim to beat their personal best, this is our fastest, most comfortable race suit ever — where innovation meets performance at every seam.

Developed using advanced CFD, every fabric panel and seam placement has been optimized for maximum aerodynamic efficiency. Engineered ribbed sleeves actively reduce drag at race speeds, delivering measurable gains in CdA to give you the edge when it matters most.

Racing in extreme heat? The internal neck ice pocket is strategically positioned to put ice and help regulate core temperature, while the asymmetric GPS pocket ensures seamless integration of tracking devices without disrupting airflow. The lower portion of the suit features Premio-based shorts, offering seamless compression, reduced friction, and exceptional aerodynamics. Up top, the ultra-light 50-denier fabric - our thinnest and smoothest to date - provides unmatched comfort and speed.

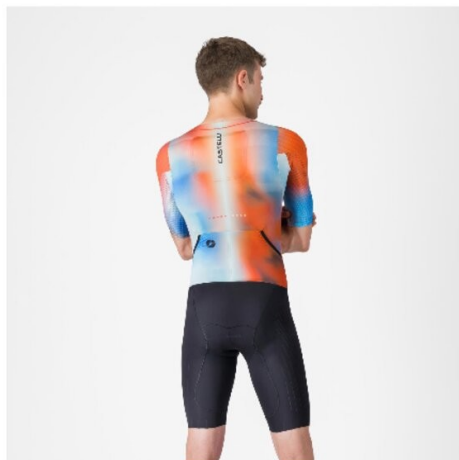
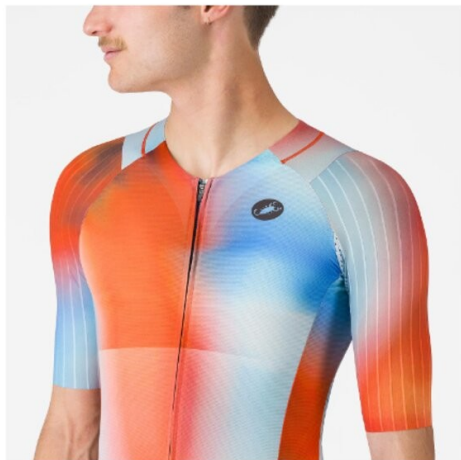
Stay cool and dry through every stage, designed to evaporate moisture right next to the skin during high-intensity efforts. A covered rear pocket offers secure, drag-free storage for nutrition, keeping your fueling streamlined.

The KISS Tri pad delivers all-day comfort and performance across swim, bike, and run so you can stay focused on the finish line, not your gear.



# FREE SANREMO 3 SUIT SHORT SLEEVE

## 8625083

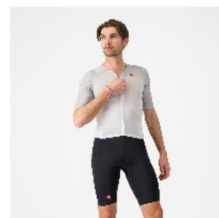


SIZES	T° RANGE
XS S M L XL XXL 3XL	15-40 °C / 59-104 °F
WEIGHT	FIT
266 g	Race
WATERPROOFNESS	WINDPROOFNESS

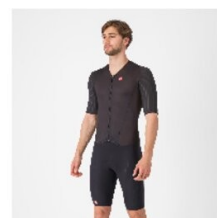
**KISS TRI** **ROSMIC CORSA**

Revolutionizing our iconic Free Sanremo Suit. Groundbreaking aero improvements due to the engineered ribbed fabric on the sleeves.

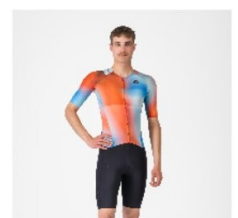
A true evolution of our best-selling suit  
 CFD-based fabric placement and seam construction  
 Engineered ribbed fabric on sleeves and shoulders to reduce drag at race speeds, with significant savings in CdA  
 Internal neck pocket for ice to keep body temperature down in hottest conditions  
 Bonded sleeve endings for comfort  
 Lightweight body fabric for optimal cooling, breathability, and comfort  
 2 rear pockets lie flat and prevent nutrition from bouncing around  
 Castelli's Sanremo front opening makes it easier to bend for cycling and straighten out for the run and swim, while also allowing for easier nature breaks or opening up for extra-hot runs  
 Leg portion in aero-optimized Forza2 Stretch fabric for maximum comfort and aerodynamic advantage  
 Silicone leg grippers to keep the leg endings in place  
 KISS Tri seat pad that provides comfort on the bike and that you almost don't feel during the run  
 UPF x



101  
WHITE/BLACK



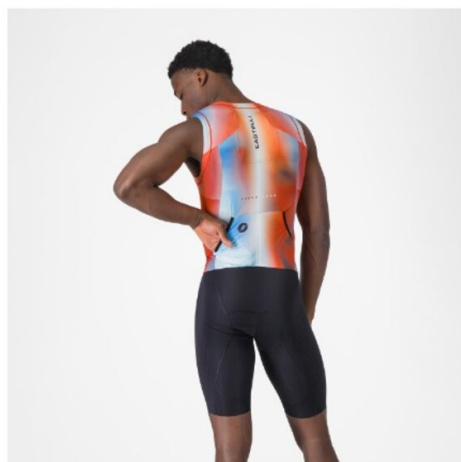
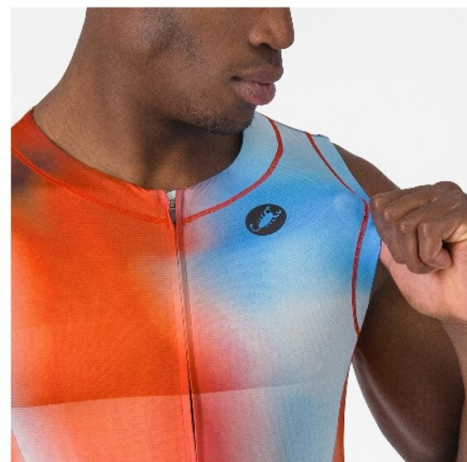
010  
BLACK



655  
PAPRIKA/WINTER SKY-BLACK

# FREE SANREMO 3 SUIT SLEEVELESS

8625084

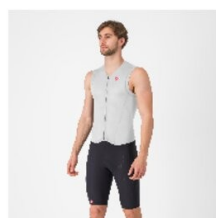


SIZES	T° RANGE
XS S M L XL XXL 3XL	15-40 °C / 59-104 °F
WEIGHT	FIT
208 g	Race
WATERPROOFNESS	WINDPROOFNESS

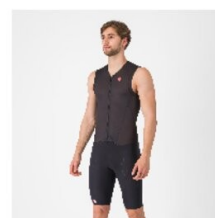
**KISS TRI** ROBICORSA

A true evolution of our best-selling sleeveless suit for longer distances.

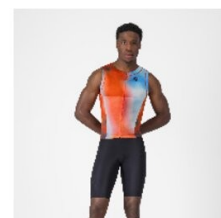
A true evolution of our iconic suit  
 CFD-based fabric placement and seam construction  
 Internal neck pocket for ice to keep body temperature down in hottest conditions  
 Soft fabric overlap around armhole to prevent chafing  
 Lightweight body fabric for optimal cooling, breathability, and comfort  
 2 rear pockets lie flat and prevent nutrition from bouncing around  
 Castelli's Sanremo front opening makes it easier to bend for cycling and straighten out for the run and swim, while also allowing for easier nature breaks or opening up for extra-hot runs  
 Leg portion in aero-optimized Forza2 Stretch fabric for maximum comfort and aerodynamic advantage  
 Silicone leg grippers to keep leg endings in place  
 KISS Tri seat pad that provides comfort on the bike and that you almost don't feel during the run  
 UPF x



101  
WHITE/BLACK



010  
BLACK



655  
PAPRIKA/WINTER SKY-BLACK

# CORE TRI SUIT SHORT SLEEVE

8625085

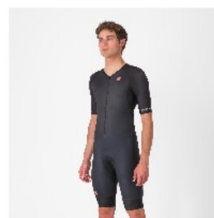


SIZES	T° RANGE
XS S M L XL XXL 3XL	15-35 °C / 59-95 °F
WEIGHT	FIT
253 g	Tailored
WATERPROOFNESS	WINDPROOFNESS

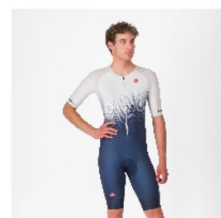
**KISS**TRI

Top short-sleeve suit for your first triathlon experience or budget-minded athletes.

Top short-sleeve suit for your first triathlon experience or budget-minded athletes  
 Elbow-length sleeves with raw-cut edges for maximum comfort and aerodynamics  
 3/4-length YKK® front zip  
 2 rear pockets lie flat in the swim but allow generous room for nutrition  
 GIRO4 flat leg grippers on longer legs for maximum aerodynamics  
 KISS Tri seat pad that provides comfort on the bike and that you almost don't feel during the run  
 UPF x



010  
BLACK

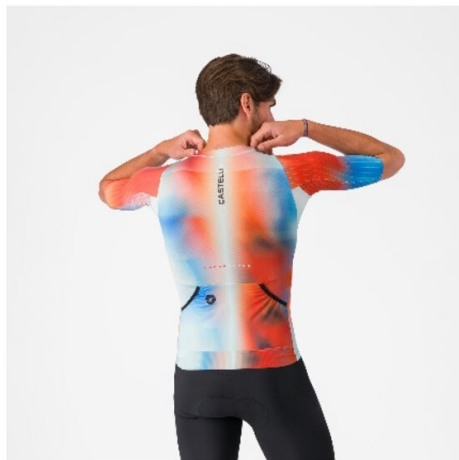
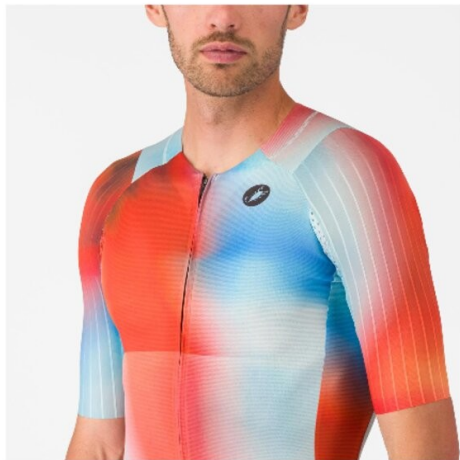


424  
BELGIAN BLUE/WHITE



# FREE SPEED 3 RACE TOP

8625087

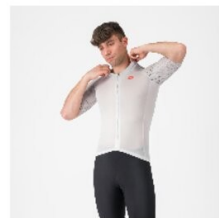


SIZES	T° RANGE
XS S M L XL XXL 3XL	15-40 °C / 59-104 °F
WEIGHT	FIT
152 g	Race
WATERPROOFNESS	WINDPROOFNESS

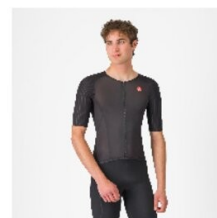
**PRO-CORSE**

Short-sleeve top for all distances, with aerodynamics from our Free Sanremo 3 Short Sleeve suit.

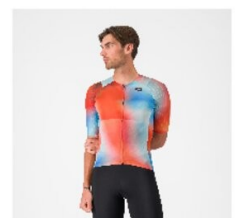
Freedom of movement, aerodynamics on the bike, comfort and protection on the run  
 CFD-based fabric placement and seam construction  
 Engineered ribbed fabric on sleeves and shoulders to reduce drag at race speeds, with significant savings in CdA  
 Bonded sleeve endings for comfort  
 Lightweight body fabric for optimal cooling, breathability, and comfort  
 2 rear pockets lie flat and prevent nutrition from bouncing around  
 YKK® Camlock® zipper  
 GIRO3 flat gripper elastic lies flat on lower back  
 SnapLock fastener at lower back to clip to shorts, to prevent riding up during swim or bike leg  
 UPF x



101  
WHITE/SILVER GRAY



010  
BLACK



655  
PAPRIKA/WINTER SKY

# FREE SPEED 3 TOP

8625088

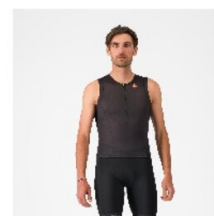
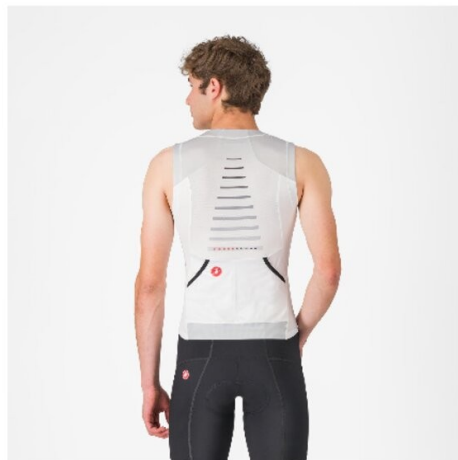


SIZES	T° RANGE
XS S M L XL XXL 3XL	15-40 °C / 59-104 °F
WEIGHT	FIT
81 g	Race
WATERPROOFNESS	WINDPROOFNESS

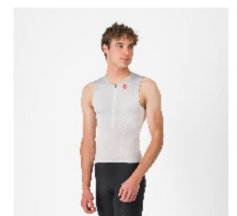
**PRO-CORSA**

Traditional sleeveless triathlon top for training and racing.

Freedom of movement and comfort in a traditional sleeveless top  
 CFD-based fabric placement and seam construction  
 Lightweight body fabric for optimal cooling, breathability, and comfort  
 2 rear pockets lie flat and prevent nutrition from bouncing around  
 YKK® Camlock® zipper  
 GIRO3 flat gripper elastic lies flat on lower back  
 SnapLock fastener at lower back to clip to shorts, to prevent riding up during swim or bike leg  
 UPF x



010  
BLACK



101  
WHITE/SILVER GRAY

# TRI SHORT

## 8625089

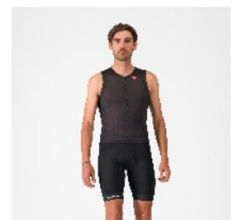
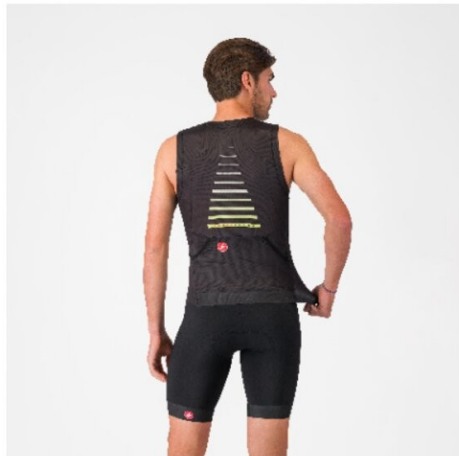


SIZES	T° RANGE
XS S M L XL XXL 3XL	15-40 °C / 59-104 °F
WEIGHT	FIT
162 g	Tailored
WATERPROOFNESS	WINDPROOFNESS

### KISS<sup>TRI</sup>

Triathlon short for training and racing, for all distances.

- KISS Tri seat pad is comfortable on the bike and virtually disappears on the run
- Inside drawcord at waist for secure fit
- Flat-lock stitching
- Rear pocket for gels or energy bars
- SnapLock fastener at waist to clip top into place for swim and bike
- GIRO3 leg gripper
- UPF 50+



010  
BLACK

# CORE DRILL SHORT

8624094



SIZES

XSS M L XL XXL 3XL

T° RANGE

- °C / - °F

WEIGHT

131 g

FIT

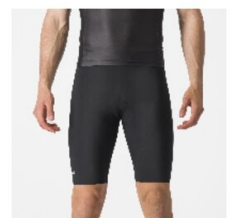
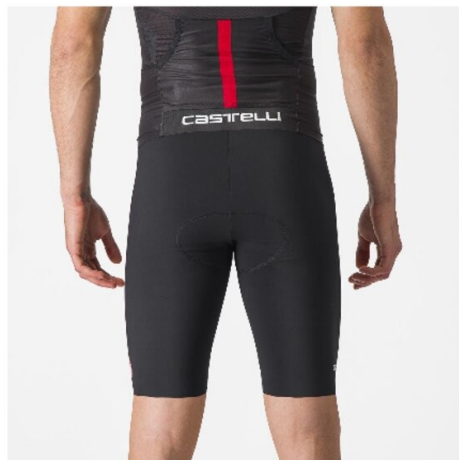
Tailored

WATERPROOFNESS

WINDPROOFNESS

Drill short for training.

The triathlon short for training or racing if you don't need a full seat pad  
 Fleece seat liner smooths out the bike ride but disappears on the run  
 Flat-lock stitching  
 Raw-cut leg ending with internal silicone grip elements



010  
 BLACK

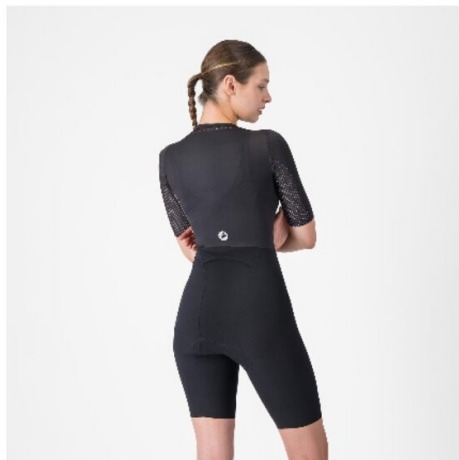
WOMEN'S TRIATHLON





# PR 3 W SPEED SUIT

8626115

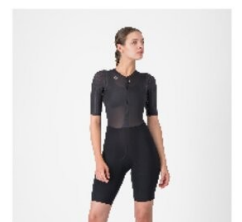


SIZES	T° RANGE
XSSMLXL	18-35 °C / 64-95 °F
WEIGHT	FIT
165 g	Race
WATERPROOFNESS	WINDPROOFNESS

**KISS TRI** **ROSMICORSA**

Optimized for speed. Built for comfort. Made to break your PR.

Pushing the limits: Our fastest, most comfortable race suit yet  
 CFD-driven design: Optimized fabric placement and seam construction using advanced CFD (computational fluid dynamics) analysis for maximum aerodynamic performance  
 Engineered ribbed sleeves: Specialized ribbed fabric on the sleeves reduces drag at race speeds, delivering significant savings in CdA  
 Internal neck ice pocket: Strategically placed pocket to hold ice to help regulate body temperature in extreme heat  
 Asymmetric GPS pocket: Discreetly placed on the neck for pro-level GPS tracking without affecting aerodynamics  
 Premio-based shorts: Seamless comfort and exceptional aerodynamics using our proven Premio fabric technology  
 Ultralight upper body: 50-denier fabric — the thinnest, smoothest we've ever used, for unmatched lightness and aerodynamic efficiency  
 Active cooling: Designed to keep you cool during the run, with fabric that enables moisture to evaporate directly next to the skin  
 Integrated rear pocket: Covered storage for gels or energy bars, with easy access and zero drag  
 KISS Tri pad: Designed for comfort and performance across all triathlon disciplines



010  
BLACK

# ENGINEERED FOR YOUR FASTEST RACE YET

When every second counts, the PR 3 Speed Suit is built to help you leave limits behind. Designed for athletes who aim to beat their personal best, this is our fastest, most comfortable race suit ever — where innovation meets performance at every seam.

Developed using advanced CFD, every fabric panel and seam placement has been optimized for maximum aerodynamic efficiency. Engineered ribbed sleeves actively reduce drag at race speeds, delivering measurable gains in CdA to give you the edge when it matters most.

Racing in extreme heat? The internal neck ice pocket is strategically positioned to put ice and help regulate core temperature, while the asymmetric GPS pocket ensures seamless integration of tracking devices without disrupting airflow. The lower portion of the suit features Premio-based shorts, offering seamless compression, reduced friction, and exceptional aerodynamics. Up top, the ultra-light 50-denier fabric - our thinnest and smoothest to date - provides unmatched comfort and speed.

Stay cool and dry through every stage, designed to evaporate moisture right next to the skin during high-intensity efforts. A covered rear pocket offers secure, drag-free storage for nutrition, keeping your fueling streamlined.

The KISS Tri pad delivers all-day comfort and performance across swim, bike, and run so you can stay focused on the finish line, not your gear.



# FREE SANREMO 3 W SUIT SHORT SLEEVE

## 8625090

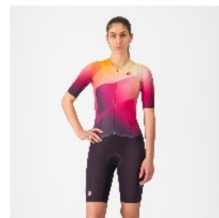


SIZES	T° RANGE
XS S M L XL	15-40 °C / 59-104 °F
WEIGHT	FIT
247 g	Race
WATERPROOFNESS	WINDPROOFNESS

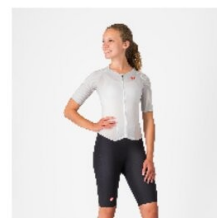
**KISS TRI** ROBIC CORSA

Revolutionizing our iconic Free Sanremo Suit. Groundbreaking aero improvements due to the engineered ribbed fabric on the sleeves.

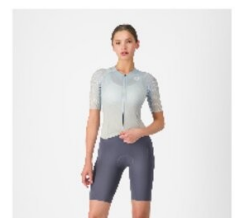
A true evolution of our best-selling suit  
 CFD-based fabric placement and seam construction  
 Engineered ribbed fabric on sleeves and shoulders to reduce drag at race speeds, with significant savings in CdA  
 Internal neck pocket for ice to keep body temperature down in hottest conditions  
 Bonded sleeve endings for comfort  
 Lightweight body fabric for optimal cooling, breathability, and comfort  
 2 rear pockets lie flat and prevent nutrition from bouncing around  
 Castelli's Sanremo front opening makes it easier to bend for cycling and straighten out for the run and swim, while also allowing for added ventilation on extra-hot runs  
 Leg portion in aero-optimized Forza2 Stretch fabric for maximum comfort and aerodynamic advantage  
 Silicone leg grippers to keep leg endings in place  
 KISS Tri seat pad that provides comfort on the bike and that you almost don't feel during the run  
 UPF x



513  
DARK NIGHT SHADE/VIVID ORANGE-



101  
WHITE/BLACK



486  
WINTER SKY/SILVER MOON-SMOKY G

# FREE SANREMO 3 W SUIT SLEEVELESS

8625091

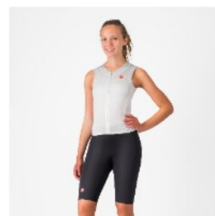


SIZES	T° RANGE
XSS M L XL	15-40 °C / 59-104 °F
WEIGHT	FIT
238 g	Race
WATERPROOFNESS	WINDPROOFNESS

**KISS TRI** **ROBICORSA**

A true evolution of our best-selling sleeveless suit for longer distances.

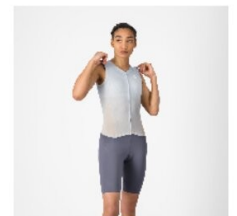
A true evolution of our iconic suit  
 CFD-based fabric placement and seam construction  
 Internal neck pocket for ice to keep body temperature down in hottest conditions  
 Soft fabric overlap around armhole to prevent chafing  
 Lightweight body fabric for optimal cooling, breathability, and comfort  
 2 rear pockets lie flat and prevent nutrition from bouncing around  
 Castelli's Sanremo front opening makes it easier to bend for cycling and straighten out for the run and swim, while also allowing for added ventilation on extra-hot runs  
 Leg portion in aero-optimized Forza2 Stretch fabric for maximum comfort and aerodynamic advantage  
 Silicone leg grippers to keep leg endings in place  
 KISS Tri seat pad that provides comfort on the bike and that you almost don't feel during the run  
 UPF x



101  
WHITE/BLACK



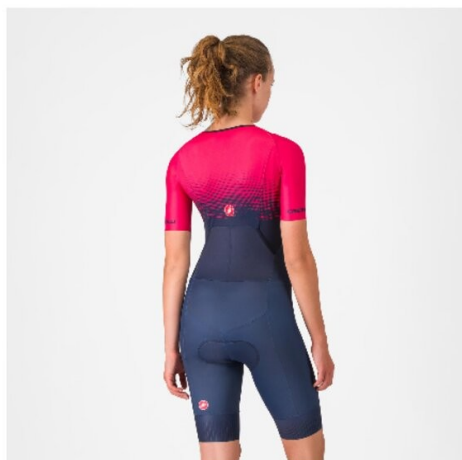
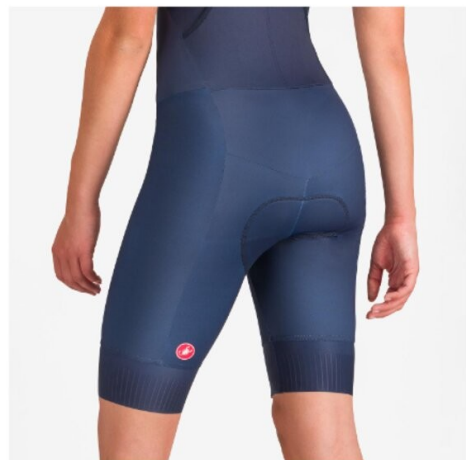
513  
DARK NIGHT SHADE/VIVID ORANGE



486  
WINTER SKY/SILVER MOON-SMOKY G

# CORE TRI W SUIT SHORT SLEEVE

8625092



SIZES	T° RANGE
XSSMLXL	15-35 °C / 59-95 °F
WEIGHT	FIT
228 g	Tailored
WATERPROOFNESS	WINDPROOFNESS

**KISS**TRI

Top short-sleeve suit for your first triathlon experience or budget-minded athletes.

Top short-sleeve suit for your first triathlon experience or budget-minded athletes  
 Elbow-length sleeves with raw-cut edges for maximum comfort and aerodynamics  
 3/4-length YKK® front zip  
 2 rear pockets lie flat in the swim but allow generous room for nutrition  
 GIRO4 flat leg grippers on longer legs for maximum aerodynamics  
 KISS Tri seat pad that provides comfort on the bike and that you almost don't feel during the run  
 UPF x



010  
BLACK



424  
BELGIAN BLUE/BRIGHT ROSE



# FREE SPEED 3 W RACE TOP

8625094

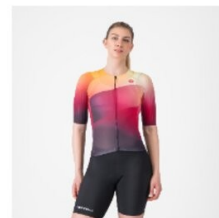


SIZES	T° RANGE
XSSMLXL	15-40 °C / 59-104 °F
WEIGHT	FIT
124 g	Race
WATERPROOFNESS	WINDPROOFNESS

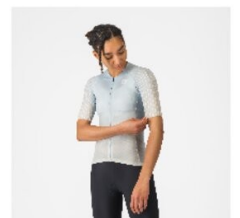
**PRO-CORSE**

Short-sleeve top for all distances, with aerodynamics from our Free Sanremo 3 W Short Sleeve suit.

Freedom of movement, aerodynamics on the bike, comfort and protection on the run  
 CFD-based fabric placement and seam construction  
 Engineered ribbed fabric on sleeves and shoulders to reduce drag at race speeds, with significant savings in CdA  
 Bonded sleeve endings for comfort  
 Lightweight body fabric for optimal cooling, breathability, and comfort  
 2 rear pockets lie flat and prevent nutrition from bouncing around  
 YKK® Camlock® zipper  
 GIRO3 flat gripper elastic lies flat on lower back  
 SnapLock fastener at lower back to clip to shorts, to prevent riding up during swim or bike leg  
 UPF x



513 DARK NIGHT SHADE/VIVID ORANGE-



486 WINTER SKY/SILVER MOON

# FREE SPEED 3 W TOP

8625095

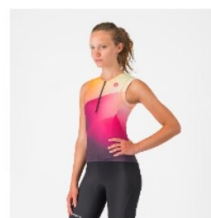
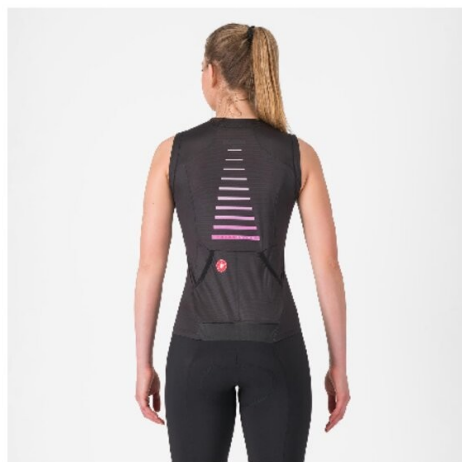


SIZES	T° RANGE
XSS M L XL	15-40 °C / 59-104 °F
WEIGHT	FIT
78 g	Race
WATERPROOFNESS	WINDPROOFNESS

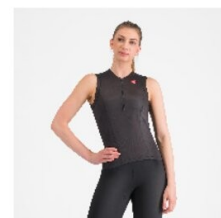
**PRO-CORSA**

Traditional sleeveless triathlon top for training and racing.

Freedom of movement and comfort in a traditional sleeveless top  
 CFD-based fabric placement and seam construction  
 Lightweight body fabric for optimal cooling, breathability, and comfort  
 2 rear pockets lie flat and prevent nutrition from bouncing around  
 YKK® Camlock® zipper  
 GIRO3 flat gripper elastic lies flat on lower back  
 SnapLock fastener at lower back to clip to shorts, to prevent riding up during swim or bike leg  
 UPF x



513  
DARK NIGHT SHADE/VIVID ORANGE



010  
BLACK

# TRI W SHORT

8625096

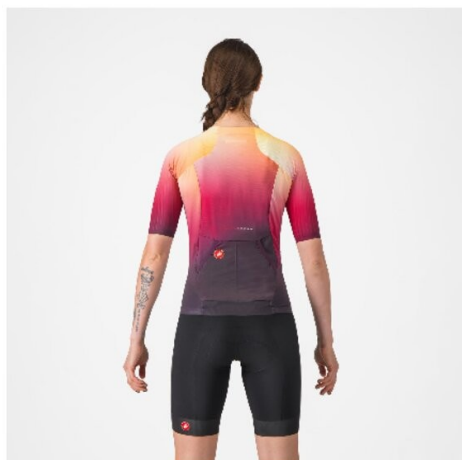
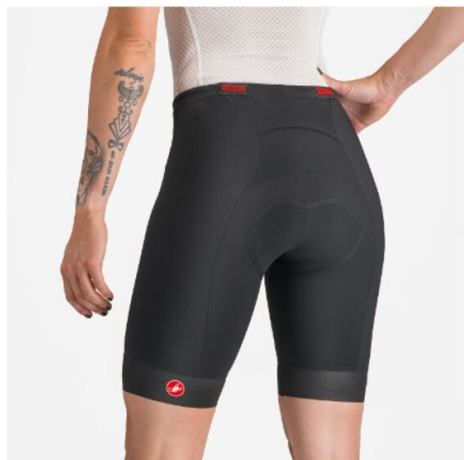


SIZES	T° RANGE
XS S M L XL	15-40 °C / 59-104 °F
WEIGHT	FIT
142 g	Tailored
WATERPROOFNESS	WINDPROOFNESS

## KISS<sup>TRI</sup>

Triathlon short for training and racing, for all distances.

- KISS Tri seat pad is comfortable on the bike and virtually disappears on the run
- Inside drawcord at waist for secure fit
- Flat-lock stitching
- Rear pocket for gels or energy bars
- SnapLock fastener at waist to clip top into place for swim and bike
- GIRO3 leg gripper
- UPF 50+



010  
BLACK

# CORE DRILL W SHORT

8624098



SIZES

XSSMLXL

WEIGHT

113 g

WATERPROOFNESS

T° RANGE

- °C / - °F

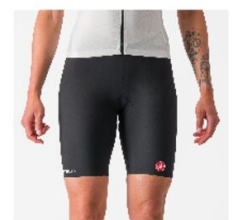
FIT

Tailored

WINDPROOFNESS

Drill short for training.

The triathlon short for training or racing if you don't need a full seat pad  
Fleece seat liner smooths out the bike ride but disappears on the run  
Flat-lock stitching  
Raw-cut leg ending with internal silicone grip elements



010  
BLACK





TRIATHLON ACCESSORIES

# PR LEG SLEEVES

8626116



SIZES

S M L XL XXL

Developed and optimized with world champion Laura Philipp  
Designed to reduce drag on the bike  
Rear stretch panel for easy on/off and improved fit  
Top elastic band for a secure, slip-free fit



101  
WHITE/BLACK

# FAST LEGS SLEEVES

8623088



SIZES

S M L XL XXL

Designed and tested in the wind tunnel to reduce drag on the bike  
Optimized fit with light level of compression  
Internal silicone tape at top to prevent sliding  
Also available in your individual team design through our custom program



010  
BLACK



101  
WHITE/BLACK



RACE BAGS



CASTELLI CYCLING

## ROLLING TRAVEL BAG

8900100



010  
BLACK

SIZES

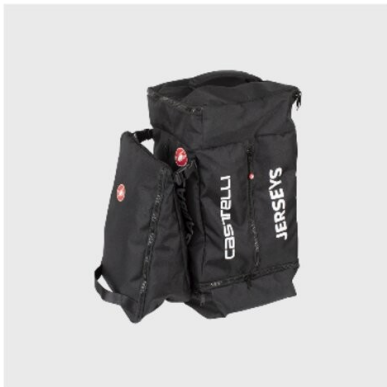
UNI

Water and stain resistant materials  
Semi rigid bottom for support and protection  
Molded bottom skid plates  
Low density wheels  
Telescoping handle  
2 main compartments  
Front and top carry handles  
Multiple internal pockets  
Fleece lined electronics pocket  
Easy access laptop sleeve  
ID window  
Reflective accents  
Capacity: 43 liter  
35x54x25cm

CASTELLI CYCLING

## PRO RACE RAIN BAG

8900111



010  
BLACK

SIZES

UNI

Developed with professional athletes  
Separate compartment for each garment  
(jerseys, Gabbas, shoes, head, hands and feet,  
jackets)  
Removeable shoe bag  
Separate and removable Grab Bag compartment  
48 x 24 x 26 cm Main Bag  
33 x 24 x 16 cm Shoe Bag

CASTELLI CYCLING

## GEAR DUFFLE BAG 2

8900110



010  
BLACK

SIZES

UNI

---

Water and stain resistant materials  
Removable padded shoulder strap  
Multiple internal pockets  
Vented external shoe or dirty laundry pocket  
Semi rigid bottom for support and protection  
Reflective accents  
Capacity: 50 liter

CASTELLI CYCLING

## GEAR BACKPACK

8900103



010  
BLACK

SIZES

UNI

---

Water and stain resistant materials  
Water resistant zippers  
Padded laptop sleeve  
Tablet sleeve  
Hidden waist belt  
Helmet attachment loops  
Adjustable sternum strap  
External bottle pocket  
Reflective accents  
Capacity: 26 liter

# UNDERSADDLE XL

8900105



SIZES

UNI

- Water and stain resistant materials
- water resistant zipper
- water resistant construction
- Adjustable hook and loop attachment straps
- External mini pump sleeve
- Internal storage pocket
- Reflective accents
- 6x15x6cm



010  
BLACK

CASTELLI CYCLING

# UNDERSADDLE MINI

8900104

SIZES

UNI

Water and stain resistant materials  
Water resistant zipper  
Water resistant construction  
Adjustable hook and loop attachment strap  
Internal storage pocket  
Reflective accents  
5x13x5cm



010  
BLACK

# SIZE CHARTS



## MEN (UNISEX)

		XS	S	M	L	XL	2XL	3XL
Chest	A	88 cm	92 cm	96 cm	100 cm	105 cm	110 cm	115 cm
Waist	B	76 cm	80 cm	84 cm	88 cm	93 cm	98 cm	103 cm
Hips	C	90 cm	94 cm	98 cm	102 cm	107 cm	112 cm	117 cm
Inseam	D	81 cm	82 cm	83 cm	84 cm	85 cm	86 cm	87 cm

## SOCKS - Euro shoe size

	S / M	L / XL	2XL
Men's Shoe Size	36-39	40-43	44-47
Women's Shoe Size	35-38	39-41	-

## SHOE-COVERS - Diluvio

	S / M	L / XL	2XL
Unisex	36-40	40-44	44-48

## WARMERS

### SIZE

S	XS - S	45 - 60 Kg
M	S - M	60 - 70 Kg
L	L - XL	70 - 80 Kg
XL	2XL - 3XL	> 80 Kg

## GLOVES MEN

	XS	S	M	L	XL	2XL
Circumference (cm)	< 18,4	18,4-20,3	20,3-22,2	22,2-24,1	24,1-26	> 26



**WOMEN**

		<b>XS</b>	<b>S</b>	<b>M</b>	<b>L</b>	<b>XL</b>
<b>Chest</b>	<b>A</b>	79 cm	84 cm	89 cm	94 cm	99 cm
<b>Waist</b>	<b>B</b>	63 cm	68 cm	73 cm	78 cm	83 cm
<b>Hips</b>	<b>C</b>	87 cm		97 cm	102 cm	107 cm
<b>Inseam</b>	<b>D</b>	75 cm	76 cm	77 cm	78 cm	79 cm

**SHOE-COVERS - Euro Shoe size**

	<b>S</b>	<b>M</b>	<b>L</b>	<b>XL</b>	<b>2XL</b>
<b>Men</b>	36-39	40-42	43-44	45-46	46-48
<b>Women</b>	35-37	37-39	39-42	-	-

**BRA SIZE CHART (B Cup Sizes)**



	<b>XS</b>	<b>S</b>	<b>M</b>	<b>L</b>	<b>XL</b>
	81-85	86-90	91-95	96-100	101-105
	65-69	70-74	75-79	80-84	85-89

**GLOVES WOMEN**

	<b>XS</b>	<b>S</b>	<b>M</b>	<b>L</b>	<b>XL</b>
<b>Circumference (cm)</b>	< 16,6	16,6-18,4	18,4-20,2	20,2-22	> 22



**PROGETTO X2 SEAMLESS X2**

Pro-level seat pad for maximum comfort. New seamless skin-care layer is softer against the skin and reduces abrasion. Separate saddle-shaped cushioning layer with progressive damping through high-density foam and gel inserts.



**KISSair<sup>2</sup>**

High-performance seat pad for all conditions. Single-piece construction with infinitely variable thickness. Updated with more supportive padding and a softer, stretchier fabric next to the skin.



**KISSTRI**

Specifically designed for the triathlete. Minimum bulk doesn't get in the way during the swim and run legs. Extra fast drying foam prevents chafing on the bike.

---

# CASTELLI LOCATIONS

---

## **MVC GROUP**

Via G. Marconi 81-83 I-32030 Fonzaso (BL) Italy

Telephone: +39 0439 5711 / Fax: +39 0439 56 436

Email: [info@castelli-cycling.com](mailto:info@castelli-cycling.com)

Website: [www.castelli-cycling.com](http://www.castelli-cycling.com)

---

*For other Castelli locations please refer to [castelli-cycling.com](http://castelli-cycling.com)*

---



# CASTELLI CATALOG

SPRING  
SUMMER  
2026

CASTELLI-CYCLING.COM

f @ y t /CASTELLYCYCLING

# CASTELLI

